



MASTERPIECE  
**MISS AUSTEN**

Premieres **Sun, May 4**

**NEXT DOOR NEIGHBORS: Flavors Without Borders**

Premiering Thurs, June 26 at 8pm



## SENIOR STAFF

Becky Magura, *President & CEO*  
Marianne Monoc, *Chief Development Officer*  
Dale Baker, *Sr. Director of Engineering*  
McKenly Blair, *Sr. Director of Human Resources*  
Shane Burkeen, *Sr. Director of Digital, Brand and Marketing*  
MiChelle Jones, *Director of Communications*  
Megan Grisolano, *Executive Producer & Sr. Director of Content*  
Samantha Andrews, *Director of Education & Engagement*  
Sarah Childress, *Director of Strategy & Operations*

## BOARD OF DIRECTORS

Sarah Teague, *Chair*  
John Weisenseel, *Immediate Past Chair*  
Perri duGard Owens, *Vice Chair*  
Brian W. Zempel, *Treasurer/Fin.Com. Chair*  
Melinda Hudgins Noblitt, *CMD, Secretary*  
Richard Warren, *Exec. Comm. & Dev. Chair*  
Scott Carey, *Exec. Comm. & Nom. Chair*  
Jennifer Biefel, *Exec. Comm. & Prog. Chair*  
Becky Magura, *President & CEO*  
Scott Becker  
Chris Boyd  
Brian Brockman  
David Campbell  
Nicole Carter  
Sophia Chaidez  
Melanie Drudge  
Demetria Kalodimos  
Dr. David J. Kennedy  
Michael Malesick  
Kathy Mattea  
Renee Monterio  
Rebecca Paul  
Meg Underwood  
Amy Cox Williams  
Charles W. Cook, Jr, *Emeritus*  
Carlene Lebus, *Emeritus*

## COMMUNITY ADVISORY BOARD

Les Kerr, *Chairman*  
Jay McDowell, *Vice Chair*  
Linda Wynn, *Member at Large*  
Penny Brink  
Karen Lynn Coffee  
Cameron McCasland  
LaTonya Moore  
Rhoda A. Scherer  
Lorenzo Washington  
Melinda "Topper" Williams

For on-air and print advertising and promotion,  
contact Derek Anderson at 615.406.9625 or  
[danderson@wnpt.org](mailto:danderson@wnpt.org)

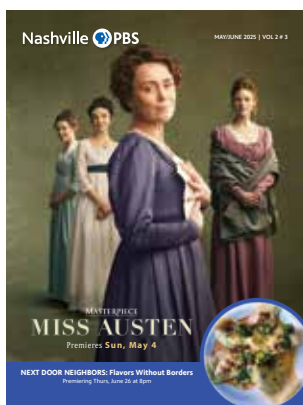
Carolyn Adkerson - Managing Editor - [cadkerson@wnpt.org](mailto:cadkerson@wnpt.org)

Printed by a Nashville Company, R.H. Boyd Publishing Company

**R.H. BOYD**  
EST. 1988

## WELCOME TO YOUR Nashville PBS

- 03 Viewers Like Me
- 04 For The Love of Nashville: Becky Magura, President & CEO
- 05 PBS: Public Trust Survey
- 06 Aging Matters
- 07 Next Door Neighbors
- 08 Nashville PBS Photo Album
- 09 Nashville PBS Photo Album
- 10 A Slice of Community
- 11 Requiem for Colour
- 12 Volunteer Spotlight
- 14 Download The PBS App & Passport
- 16 PBS Highlights
- 18 Membership Special Highlights
- 19 Create and WORLD Channels
- 20 Acoustic Rooster (A new PBS KIDS' Series)
- 20 PBS KIDS Channel Schedule
- 21 Nashville PBS Highlights
- 21 Daytime Schedule
- 22 Primetime for May & June
- 26 Stories That Define Us: Spotlight – Rachel Rodriguez
- 27 How to Support NASHVILLE PBS
- 27 Funding Partners



### ON THE COVER

## MISS AUSTEN

Sundays, May 4 – May 28

Based on Gill Hornby's best-selling novel, this 4-part period drama brings a fresh and intimate perspective to the Austen sisters' lives — their joys, heartaches, and the passions that would shape Jane's iconic novels.

Story on Page 16.

For a digital copy, or the magazine archive,  
please go to [wnpt.org/nashvillepbs-magazine/](http://wnpt.org/nashvillepbs-magazine/)  
or scan the QR Code.



## CHANNEL GUIDE & SERVICE PROVIDERS

SERVICE PROVIDER	Nashville PBS	WORLD	PBS KIDS	CREATE
Over-the-Air	8.1	8.2	8.3	8.4
Charter	8	176	189 or 192	190, 192, 193
Comcast-Xfinity	8, 1008	241	242	256, 1161
DirecTV	8	NA	288	NA
DirecTV-Stream	NA	NA	288	NA
YouTube	8	NA	NA	NA
U-Verse	8, 1008	NA	NA	NA
TDS	8, 1008	NA	NA	NA
LightTube	8	NA	NA	NA





# Viewers Like Me

**What's your favorite #ViewersLikeMePBS story?**

My first experience with PBS came through the memories I have of *Sesame Street*, *The Electric Company* and *Mr. Rogers' Neighborhood*.

I've had the opportunity to cultivate a whole new generation with my two daughters, watching them embrace PBS with shows like *Daniel Tiger's Neighborhood*.

**FREDDIE O'CONNELL**

*Mayor of the Metropolitan Government of Nashville and Davidson County*



**LEARN MORE AT [WNPT.ORG/VIEWERSLIKEME](https://wnpt.org/viewerslikeme)**



L-R: American Public Television (APT) President & CEO, Kate Riley, Becky Magura & Patrick Butler

## FOR THE LOVE OF NASHVILLE ... and for the love of PBS

**Becky Magura**  
President & CEO of Nashville PBS

I was honored recently to be recognized by America's Public Television Stations (APTS) with the 2025 inaugural Patrick Butler National Advocacy Award. I can't thank APTS President and CEO, Kate Riley, enough for this recognition, especially as it is named after an incredible champion for public media and fellow Tennessean, Patrick Butler.

My career in public television has always been a passion for me, and I know first-hand the impact of public media. Our system of public media, created by the Public Broadcasting Act, is more relevant today than ever before. It is the last locally owned and governed media with the sole mission of serving the American people with non-commercial content that educates, inspires and entertains.

PBS is not a network, but rather a member federated system, to which Nashville PBS belongs. We are licensed to the people of middle Tennessee and governed by a local Board of Directors.

**Currently, there is a lot in the news about our federal funding and the situation is changing quickly. Unfortunately, the focus is too often on national programs instead of talking about the devastating impact eliminating public media funding would have on local stations, like Nashville PBS!**

Cutting or eliminating funding for the Corporation for Public Broadcasting would impact families who rely on the free, high-quality educational children's content that is available on public television and via streaming. It would put at risk our ability to provide public safety infrastructure and communications, such as the PBS WARN system (Warning, Alert and Response Network).

And it would certainly cut important support for our local series you have come to love and appreciate such as TENNESSEE CROSSROADS and VOLUNTEER GARDENER, not to mention amazing national content such as ANTIQUES ROADSHOW, MASTERPIECE, NOVA, and FINDING YOUR ROOTS.

At the invitation of the PBS President, Paula Kerger, I was in the audience for the recent House Oversight Committee, Delivering on Government Efficiency (DOGE). It meant a great deal to me to hear the testimony of Paula Kerger on the importance of this funding for local stations. I know without a doubt that *the \$1.60 per American annually is a wise investment into local stations throughout our country*, like Nashville PBS. It provides a crucial lifeline to their communities, offering award winning local journalism and storytelling, research-based educational resources, reliable emergency communications and cultural enrichment.

The federal funding for the Corporation for Public Broadcasting that we are hearing about in the news is funding that comes directly to Nashville PBS. It is foundational money that supports a robust infrastructure of public media stations, licensed to local communities, like Nashville.

***This total appropriation for the Corporation for Public Broadcasting that supports public television and public radio across the country is 100th of 1% of the annual federal budget. However, losing this funding would cause significant damage to Nashville PBS and our sister stations across the state and nation.***

This is a trying time for our nation, and we recognize the need to reduce the federal budget. Working together with our elected leaders, I believe we can find a solution that would allow Nashville PBS to continue providing needed and unduplicated services as a nonpartisan, non-commercial, educational community institution, without defunding or dismantling our entire system.

I encourage you to learn more. Sign up to be an advocate at [protectmypublicmedia.org](https://protectmypublicmedia.org)

As always, I'm grateful for your support and thankful to be part of public television here in Tennessee, especially in Nashville. **If you have any questions or concerns, please don't hesitate to reach out to me at Nashville PBS 615-259-9325 or [bmagura@wnpt.org](mailto:bmagura@wnpt.org).**

Thank you!



PROTECTMYPUBLICMEDIA.ORG





TRUSTED. VALUED. ESSENTIAL.

2025

For 22 years,  
**PBS is #1 in public trust.**



of Americans say  
it is important  
for the country to  
have a strong public  
television system.

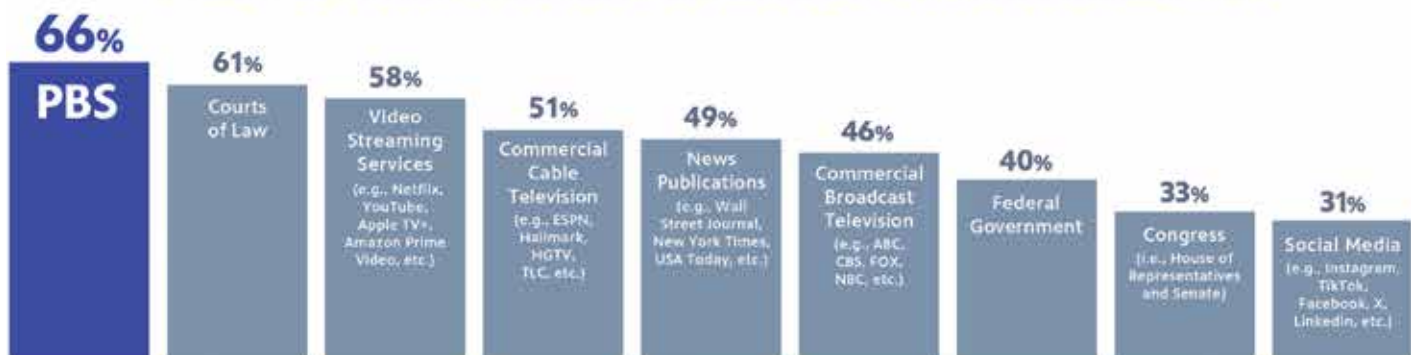


of Americans say  
PBS has an important  
role in providing  
emergency alerts  
to the public.



PBS is the  
**most trusted**  
news and public  
affairs network.

Americans say  
**PBS is the most trusted institution.**



**76% agree**  
PBS stations provide an  
**excellent value**  
to communities.



YouGov interviewed 2,053 respondents online who were then matched down to a sample of 2,000 to produce the final dataset. The respondents were matched to a sampling frame and weighted based on gender, age, race, and education. The sampling frame is a politically representative "modeled frame" of U.S. adults. Parents were defined as those who said they had children under 18 living in the household. Total figures reported exclude those who answered "unsure/don't know/none of the above" for individual questions (which ranged from 1%–28% per question). The margin of error is +/- 2.63%.

**YouGov**  
Jan. 6–10, 2025

# NASHVILLE PBS ORIGINALS



## AGING WITH HONOR

Thurs, May 22 – 8pm

While veterans bring a wealth of strengths and life experiences to navigate challenges common in later stages of life, some endure longstanding or emerging mental health conditions. They may also struggle with shifts in roles, responsibilities, and relationships, which can be compounded by substance misuse, financial or housing difficulties. To effectively address the health and well-being of aging veterans, it's essential to acknowledge their diverse experiences, as the impact of military service varies across different eras and conflicts. Therefore, understanding the shared and unique aspects of aging among veterans from various wars and conflicts is critical.



**Join Nashville PBS every first Thursday at a local FiftyForward Center near you!**

Our **June 5th event (at 10am)** will feature a viewing of our latest documentary, **GRANDPARENTS RAISING GRANDCHILDREN**, followed by a group conversation, resource sharing and light refreshments.

Events are free but space is limited.  
Please register at [wnpt.org/events](https://wnpt.org/events).

*\*Major funding for AGING MATTERS is provided by the West End Home Foundation, The Jeanette Travis Foundation and The HCA Healthcare Foundation. Additional funding provided by Jackson National Life Insurance Company.*





# NASHVILLE PBS ORIGINALS

## NEXT DOOR NEIGHBORS



## FLAVORS WITHOUT BORDERS

AN ORIGINAL NASHVILLE PBS DIGITAL SERIES

Nashville's food scene is evolving. While Music City still takes pride in its iconic meat-and-three diners, smokehouse-barbecue joints, fiery hot chicken, and buttermilk biscuits, a new wave of immigrant-owned restaurants is redefining the city's culinary identity. Beloved by locals and tourists alike, these global eateries bring bold flavors, rich traditions, and fresh perspectives to a town long known for its Southern roots.



*\*NEXT DOOR NEIGHBORS is made possible by the support of the Nissan Foundation.*



# NASHVILLE PBS IN THE NEIGHBORHOOD

## JEROME MOORE AT BELMONT & TSU

Photo Credit Jordan Johnson





# NASHVILLE PBS IN THE NEIGHBORHOOD

## A DAY ON THE HILL





# NASHVILLE PBS ORIGINALS

## A SLICE OF THE COMMUNITY THE GOOD IN US

Thurs, May 29 at 6:30pm

Host & Producer Jerome Moore takes you on an inspiring journey through Nashville's dynamic small businesses and social enterprises, meeting the visionary people driving innovative solutions and building stronger, more connected communities: the owner of a local pizza place on a mission to support community development and create a hub of connection; the leader of Humphrey's Street Coffee, empowering under-resourced teens with essential workforce skills for a brighter future; the men behind the I READ I LEAD campaign, tackling Nashville's literacy crisis among Black and Brown boys by using reading as a powerful tool for community-building and empowerment; the incredible women teaching Spanish across the city, breaking down barriers and strengthening community bonds through language; and how women are using fitness to build more than just muscles—they're creating unbreakable connections that strengthen both body and community.

The graphic features a blue background with the text 'A SLICE OF THE COMMUNITY' in large, white, stylized letters. Below this, it says 'LIVE SCREENING & GUEST TALK' and 'THURS., MAY. 29, AT 6:30PM' with the website 'wnpt.org/events'. The Nashville PBS logo is at the bottom left. On the right, there's a large photo of Jerome Moore with the text 'THE GOOD IN US' and 'A NEW SHOW WITH JEROME MOORE'. Below these are six small portraits of diverse individuals.

*\*A SLICE OF THE COMMUNITY is made possible with the support of First Horizon Foundation.*







# REQUIEM FOR COLOUR

## A Journey through Lament and Joy

Mon, June 23 - 8 pm; Fri, June 25 - 10 pm

Composed by Belmont School of Music faculty member Dr. Jeffery Ames, REQUIEM FOR COLOUR is a musical, literary and visual journey that begins in West Africa and ends in present day North America. A groundbreaking work blending genres from classical to R&B, oration to spoken word, Ames' REQUIEM FOR COLOUR is a powerful original orchestral and choral experience. Dr. Ames shares that this unique work "honors the lives and legacies of enslaved blacks from 1619 to 1865, and our contemporary Black martyrs who offered themselves as a sacrifice for equality and freedom."

From the highly accomplished conductor, composer, and professor, this composition is a labor of love that explores and honors the experiences of generations of Black people and their descendants. Informed by his Christian faith and the traditions of gospel roots, Ames has created a work that spans generations in reckoning with our current societal vices of racism and injustice.

Dr. Jeffery Ames has performed and guest conducted internationally in the countries of Costa Rica, Germany, Italy, Latvia, Estonia, South Korea, and the Republic of Ghana. An accomplished accompanist, he has performed and collaborated with well-known conductors such as André Thomas, Jo-Michael Scheibe, Lynne Gackle, and Anton Armstrong. He has also collaborated with well-known celebrities such as Trisha Yearwood, Laura Bell Bundy, CeCe Winans, Connie Smith, Ricky Skaggs and The Whites, internationally acclaimed mezzo-soprano Denyce Graves, Michael W. Smith, Kathy Mattea, Sheryl Crow, and legendary rock band the Rolling Stones.

**PHOTOGRAPHY**  
IN TENNESSEE  
*Early Studio and the Medium's First Century*

**TENNESSEE**  
EST. 1937  
**STATE MUSEUM**  
FREE ADMISSION  
1000 Rosa L. Parks Blvd. in Nashville  
615.741.2692 • TNMuseum.org

f i x

**Opening June 10**



## VOLUNTEER SPOTLIGHT: RUBY REVOLORIO



L-R: Peggy Lee & Volunteer Ruby Revolorio

Nashville PBS proudly highlights Ruby Revolorio, our first Workplace Learning Student from Nashville School of the Arts. Ruby joined us through a nine-month placement made possible by the Tennessee Department of Labor & Workforce Development's WIOA (Workforce Innovation and Opportunity Act) program.

As part of our Education & Engagement department, Ruby made an immediate impact—bringing creativity, dedication, and a fresh perspective to everything she touched. Her work has helped lay the groundwork for our growing experiential learning program, a key pillar in Nashville PBS's strategic plan.

Congratulations to Ruby on her upcoming graduation! We're so grateful for her hard work and proud to have been part of her journey. Her future is bright, and we can't wait to see where it takes her.



## *Enchanted* CASTLES

**MAY 1 - AUGUST 17**

- Explore 5 whimsical castles among the summer blooms
- Fairytales come to life for the young and young at heart
- Climb, swing, slide, imagine and play
- Reserve tickets in advance at [cheekwood.org](https://cheekwood.org)



 **Cheekwood**  
ESTATE & GARDENS

 **Castle**  
HOMES

 Sponsored by  
**mitsui & co.**



2024/25  
SEASON

# NASHVILLE SYMPHONY

Celebrating Giancarlo Guerrero



## MAY THE FOURTH: THE MUSIC OF STAR WARS

with the Nashville Symphony

MAY 4 | 8 PM at Ascend Amphitheater

Enrico Lopez-Yañez, conductor



## GUERRERO'S FINALE: MAHLER'S SYMPHONY OF A THOUSAND

with the Nashville Symphony & Chorus

MAY 23 & 24 | 7:30 PM & MAY 25 | 2 PM

Giancarlo Guerrero, conductor | Tucker Biddlecombe, chorus director  
Vanderbilt Youth Choirs | Mary Biddlecombe, chorus director

*Choral performances are generously supported by C.B. Ragland Company.*



## INDIGO GIRLS

with the Nashville Symphony

MAY 29 TO 31 | 7:30 PM

Enrico Lopez-Yañez, conductor



## THE PRINCESS BRIDE IN CONCERT

with the Nashville Symphony

JUN 21 & 22 | 2 PM & JUN 21 | 7:30 PM

Gonzalo Farias, conductor

25/26 SEASON TICKETS ON SALE NOW

 Nashville  
Symphony  
Giancarlo Guerrero, music director



BUY TICKETS: 615.687.6400  
NashvilleSymphony.org/Tickets

WITH SUPPORT FROM  
 TENNESSEE  
ARTS  
COMMISSION  
 METRO ARTS  
A PART OF THE CITY OF NASHVILLE

# DOWNLOAD



## HERE'S WHY...

The PBS App features thousands of full-length videos and the ability to watch live TV from Nashville PBS. You can stream award-winning films and iconic series from PBS and Nashville PBS ANYTIME and ANYWHERE.



Activating the PBS App allows you to watch content on demand. Easily connect with programs from Nashville PBS, access your Watchlist, and sync all of your favorite local and national shows across your devices.

You can download the FREE PBS APP to your tablet, TV, smartphone, or any of your viewing devices.



Watch new specials and currently airing PBS shows. Check out your favorite programs. Stream on PBS.org and the PBS App on all devices.

Nashville  PBS



Scan for More  
Information



# THE PBS APP

With a Nashville PBS Annual \$60 Membership (only \$5/month), PBS Passport gives you extended access to a digital on-demand library of more than 1,500 episodes of PBS fan favorites. Plus new programs are being added regularly.

For example, you will have extended access to past fan favorites like GREAT PERFORMANCES, FINDING YOUR ROOTS and NOVA and AMERICAN MASTERS. You can also stream early releases of new series and binge-watch PBS favorites like MISS SCARLET, ALL CREATURES GREAT & SMALL, and UNFORGOTTEN. There's plenty of local stories too, like MUSIC ROW: NASHVILLE'S MOST FAMOUS NEIGHBORHOOD. The list goes on and on...

The PBS App is currently available to download on the following platforms: Android, iOS, Roku, Samsung Smart TV (Tizen), Apple TV, Android TV, Amazon Fire TV, Amazon Firestick, and Chromecast.



**WATCH NOW**

WITH THE FREE PBS APP\*



Scan for More  
Information

# PBS HIGHLIGHTS

Antenna Ch. 8.1; Charter Ch. 8; Comcast-Xfinity Ch. 8, 1008



## Miss Austen on Masterpiece

Four Episodes,  
Premieres May 4 at 8pm

Miss Austen takes a literary mystery – Cassandra Austen notoriously burning her famous sister Jane's letters – and reimagines it as a fascinating, witty and heart-breaking story of sisterly love.

In 1830, a while after Jane has died, Cassandra races to see her young friend Isabella, who is about to lose her home following her father's death. Cassandra is ostensibly there to help her friend, but her real motive is to find a stash of private letters which, in the wrong hands, could destroy Jane's reputation. On discovering them, Cassandra is overwhelmed as she is transported back to her youth. In flashback, we meet Young Cassy and Jane as they navigate the infatuations, family feuds and dashed hopes which shaped their lives and laid the foundations for Jane's stories.

Cassandra's re-evaluation of her past eventually leads her to realise how blind she has been to the real cause of Isabella's heartache and distress. Finding a way to guide Isabella towards true happiness, Cassandra is finally able to understand and celebrate the sacrifices she chose to make for her brilliant sister, Jane.

### May 4, Episode 1

A letter arrives from Kintbury, once the home of Jane and Cassandra's dearest friend Eliza.

### May 11, Episode 2

After uncovering Mary Austen's lies, Cassandra is determined to keep Jane's letters private.

### May 18, Episode 3

At Kintbury, Cassandra's fever is raging. In her delirium, she nearly lets slip that she is in possession of Jane's letters, but manages to keep Mary from finding them.

### May 18, Episode 4 (at 9pm)

The urgent question of Isabella's future continues to occupy Cassandra as she learns the truth about Isabella and Lidderdale's past.



## Bugs That Rule The World

Wednesdays, May 7 - 28 at 9pm

Take a four-part journey into the world of insects, showcasing the planet's most populous but least appreciated creatures.

A handful of scientists and enthusiasts around the globe explore the beauty and complexity of bugs, discovering cunning adaptations, bizarre behaviors, and why insects are known as "the little things that run the world."

Investigations into a worldwide insect "apocalypse" highlight the critical roles bugs play on the planet and the bleak picture of a future without them. From pollinators like moths, bees and butterflies that bring food to our plates, to tiny insect assassins to the clean-up crews that work the land and purify the soil, insects have been running the world since before the time of the dinosaurs.

Stunning macro cinematography reveals their color, complex body plans and surprisingly charming lives in otherworldly detail, from intricate mating rituals to staggering physical transformations straight out of science fiction.

A glimpse into our long history of dependence on insects reveals that even in some of the planet's most remote corners, this relationship – thousands of years old – may now be on the verge of collapse.

### May 7, Insect Apocalypse

Could a world without insects survive? Follow scientists investigating the global insect "apocalypse."

### May 14, Lifegivers

Dive into the colorful world of Earth's essential pollinators – bees, moths, and butterflies.

### May 21, Eat or Be Eaten

Uncover the ruthless world of some of the cleverest insects in the animal kingdom.

### May 28, Beetle Mania

Are beetles truly 'the most important species on the planet'?



From NEXT TO NORMAL, May 9 at 8:30pm

## Great Performances: The Best of Broadway

Fridays, May 9 - 30 at 8:30pm

Raise the curtain on four star-studded Broadway productions, featuring drama, comedy and music.

### May 9, Next To Normal

An intimate portrait of a modern family, the show explores illness, loss, grief and family as a suburban wife and mother lives with bipolar disorder and is haunted by her past. This three-time Tony Award and Pulitzer Prize-winning musical stars Caissie Levy (Broadway's "Frozen"), Jamie Parker (Broadway's "Harry Potter and the Cursed Child"), Jack Wolfe (Netflix's "Shadow & Bone") and Eleanor Worthington-Cox.

### May 16, Yellow Face

An Asian American playwright protests yellowface casting in the blockbuster musical "Miss Saigon," only to mistakenly cast a white actor as the Asian lead in his own play. The repercussions resonate in this farce about the complexities of race. Tony-winning playwright David Henry Hwang's comedy from Roundabout Theatre Company stars Daniel Dae Kim ("Lost," "Hawaii Five-0").

### May 23, Girl From The North Country

In 1934 Duluth, Minnesota, a group of wayward travelers' lives intersect in a guesthouse filled with music, life and hope. The musical features 20 reimagined, legendary Bob Dylan songs, including "Forever Young," "All Along the Watchtower," "Hurricane," and "Like a Rolling Stone."

### May 30, Kiss Me Kate (Pledge Show)

Cole Porter's legendary musical comedy features classic songs including "Another Op'nin, Another Show," "So In Love," "Brush Up Your Shakespeare," "Too Darn Hot" and more.



# PBS HIGHLIGHTS

Antenna Ch. 8.1; Charter Ch. 8; Comcast-Xfinity Ch. 8, 1008



## NATIONAL MEMORIAL DAY CONCERT

**Sunday, May 25 at 7pm, encore at 8:30pm**

The National Memorial Day Concert honors our country's veterans, servicemen and women and military families. The concert unites the country in remembrance and appreciation of those who gave their lives for our nation and serves those who are grieving through the mission put forward by Abraham Lincoln in his second inaugural address, "Let us strive on to finish the work we are in; to bind up the nation's wounds; to care for him who shall have borne the battle, and for his widow, and his orphan."

For 35 years, this multi-award-winning television event, featuring uplifting musical performances, documentary footage and dramatic readings, has become an American tradition and is one of PBS' highest-rated programs. On the broadcast, celebrities share real-life stories spanning the broad history of our nation's military conflicts, award winning musicians perform songs in tribute to our country's true heroes and the finest performers from the United States premier military choirs and ensembles are featured.

Hosted by Joe Mantegna and Gary Sinise, performers include: Patrick Lundry and the Ministers of Music; the Military District of Washington; the U.S. Army Herald Trumpets; the U.S. Army Chorus; the U.S. Navy Band Sea Chanters; the U.S. Air Force Singing Sergeants; and the Soldiers' Chorus of the United States Army Field Band.



## Grantchester, Season 10

**Eight Episodes,  
Premieres Sun, June 15 at 8pm 10pm**

As DI Geordie Keating and Reverend Alphy Kottaram continue to work together as a crime-solving duo in scenic Grantchester, they must also support each other through changing times, family struggles, and personal secrets.

### **June 15, Episode 1**

A suspicious death interrupts the Grantchester Easter celebrations. Alphy attempts to use the case as a distraction from his personal life.

### **June 22, Episode 2**

A death at the university plunges Geordie and Alphy into a world of academic adversaries.

### **June 29, Episode 3**

Alphy's attempts to cook a romantic dinner are interrupted when a familiar face arrives unannounced at the vicarage.

### **July 6, Episode 4**

Alphy and Geordie investigate witchcraft at a home for orphaned and disadvantaged children run by an old friend of Alphy's.

### **July 13 – Episode 5**

Leonard's drinking lands him in a prison cell overnight. When he wakes up, the consequences only escalate from there.

### **July 20, Episode 6**

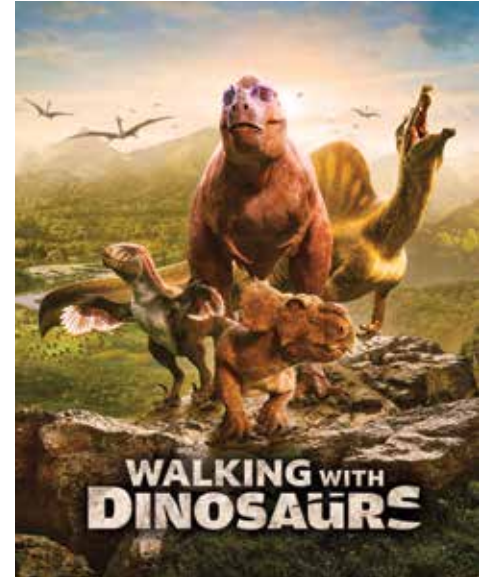
Alphy and Geordie investigate when a member of a rock band is murdered. Alphy struggles with some family history.

### **July 27, Episode 4**

Cathy and Mrs. Chapman's new business venture hits a serious obstacle. Geordie tries to intervene in Alphy's personal life, unbeknownst to Alphy.

### **Aug 3, Episode 5**

Alphy and Geordie keep an eye on rising tensions as a controversial figure is invited to speak at the university. When a murder is committed, they disagree on how to approach the case.



## Walking with Dinosaurs

**Six Episodes,  
Premieres Mon, June 16 at 7pm**

This new six-part series takes viewers on a unique journey back through time, revealing the incredible life stories of these long-lost giants.

Each episode tells the dramatic story of an individual dinosaur whose remains are currently being unearthed by the world's leading dinosaur hunters. Thanks to cutting-edge science, experts can reveal how these prehistoric creatures lived, hunted, fought and died more accurately than ever before. As the dinosaur's bones emerge from the ground, the series will bring these prehistoric stories to life with state-of-the-art visual effects – making each episode a gripping dinosaur drama based on the very latest evidence.

Audiences meet a range of spectacular dinosaur species in an array of prehistoric landscapes. These include a Spinosaurus – the largest carnivorous dinosaur to ever walk the earth – roaming the rivers of ancient Morocco; a youthful Triceratops battling a ravenous T. rex in North America; and a lonely giant Lusotitan risking it all for a love in Portugal.

There's never been a better time to travel back to the prehistoric. We're living through a golden age of palaeontology that is transforming our understanding of dinosaurs. Around 50 new species are being identified every year, and science is revealing extraordinary new details about dinosaur biology and behaviour. Across the globe, hundreds of dinosaur experts are currently scouring the wilds for new dig sites, and this series has exclusive access to some of the very best.



# MEMBERSHIP SPECIAL HIGHLIGHTS

NASHVILLE PBS is grateful for your support! Your sustaining donations are vital in helping us continue to serve Nashville and Middle Tennessee!

Antenna Ch. 8.1; Charter Ch. 8; Comcast-Xfinity Ch. 8, 1008



## TOMMY EMMANUEL: Live at the Sydney Opera House

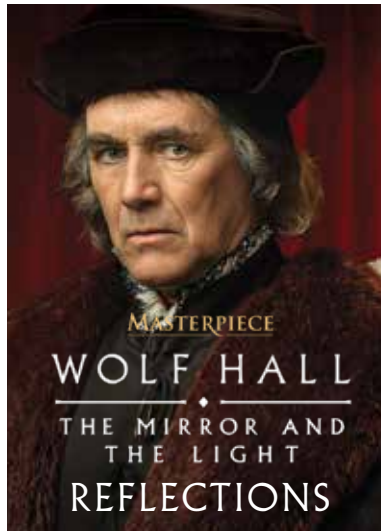
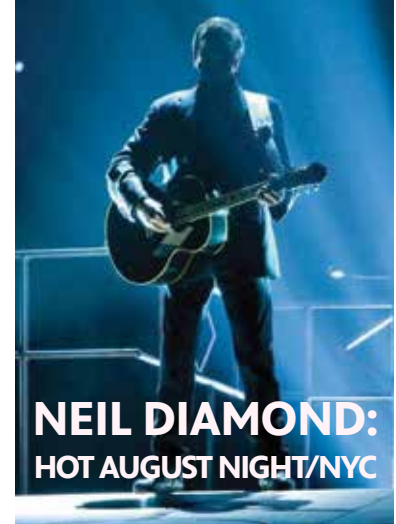
May 31 at 7pm; June 2 at 12am; June 5 at 8pm;  
June 6 at 3pm; June 9 at 8:30pm; June 13 at 12am

Featuring performance highlights from his May 2023 concerts plus conversations with Tommy at the Maton Guitar Factory and cruising on Sydney Harbor.

## NEIL DIAMOND: Hot August Night / NYC

May 31 at 8:30pm; June 2 at 1:30am; June 6 at 10pm;  
June 7 at 3:30am

The film features Neil singing a variety of his classic hits, and reflects on a visit to his boyhood home, taking his audience on a journey from Brooklyn to Madison Square Garden..



## WOLF HALL: The Mirror And The Light: Reflections

June 1 at 8:30pm; June 2 at 4:30pm; June 8 at 4:30pm

Cast members and creators discuss what it was like to return to filming a decade after the first series and how the passage of time has influenced their view of 16th-century England. The program explores the series' locations and how modern production techniques brought the England of the 1520s to life.

## COZY MYSTERIES OF MASTERPIECE

June 1 at 7pm; June 2 at 3pm; June 8 at 3pm

Discover the secrets of the "cozy mystery" in this exploration of the genre. Go behind-the-scenes of GRANTCHESTER, MAGPIE MURDERS, MOONFLOWER MURDERS, THE MARLOW MURDER CLUB, and MISS SCARLETT to learn what makes these mysteries so enchanting.



Ketch Secor & Molly Tuttle

## RECORDED LIVE AT THE ANALOG | Molly Tuttle & Ketch Secor

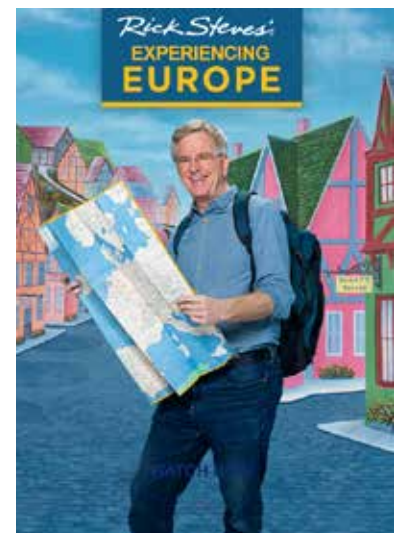
June 5 at 9:30pm; June 6 at 4:30pm; June 13 at 1:30am

Tuttle's music is rooted in bluegrass, but she also explores other genres like folk, country, and pop. Secor is a singer, songwriter and multi-instrumentalist commanding every stage like a charismatic evangelist. The Analog is an intimate venue that transforms each event into an exclusive experience, as though the audience has been invited into an artist's living room. Recorded in December of 2024.

## RICK STEVE' EXPERIENCING EUROPE

June 3 at 7pm & 10:30pm; June 5 at 9:30pm; June 7 at 4:30pm

Rick shares lessons from a lifetime of European travel so that viewers can learn from his experiences and travel with minimal hiccups. From itinerary planning to venturing off the beaten path, this entertaining, information-packed program recorded in front of an audience teaches viewers the essential skills for smart travel. Get Rick's tips on packing light, avoiding crowds, outsmarting scams, and eluding pickpockets – all while maximizing the opportunities for cultural and culinary experiences."







# CREATE SHOW MARATHONS



Antenna Ch. 8.4; Charter Ch. 190, 192, 193; Comcast-Xfinity Ch. 256, 1161

The Create Marathons run Friday 8 – 1pm, Saturday 7am – 12pm, Sunday 11am – 4pm, and weeknights 8 – 9pm & 1am – 2am



## CINCO WITH PATI

**May 2 - 8**

Feel the festive spirit in a celebration of food, family, and fun in Mexico with Pati Jinich and find inspiration for a menu fit for a Cinco de Mayo fiesta.



## MOTHER KNOWS BEST

**May 9 - 15**

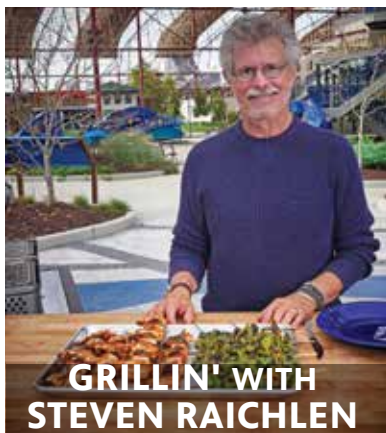
This Mother's Day weekend, we're letting mom take the lead! Join Lidia Bastianich, Colleen Kelly, Diane Kochilas, and Carrie Morey for big adventures and tasty bites that bring the family together.



## LUCKY CHOW

**May 16-22**

Celebrate delightful and delicious Asian cuisines across America with Danielle Chang as she explores the stories and flavors of the Asian-American experience on Lucky Chow.



## GRILLIN' WITH STEVEN RAICHLEN

**May 23-May 29**

Steven Raichlen is bringing the heat and the flavor we're looking for with a great grilling marathon full of tips and tricks that will impress any guests.



## PARKS & REC WITH SAMANTHA BROWN

**May 30-June 5**

Whether you're looking for a quick getaway, a scenic road trip, or a far-flung destination, Samantha Brown has you covered. Find your next Place to Love in one of these dazzling locales.



Antenna Ch. 8.2; Charter Ch. 176; Comcast-Xfinity Ch. 241

## Airing on the WORLD Channel Weekdays at 11am & 3am

AMANPOUR AND COMPANY features wide-ranging, in-depth conversations with global thought leaders and cultural influencers on the issues and trends impacting the world each day, from politics, business and technology to arts, science and sports. Christiane Amanpour leads the conversation on global and domestic news from London with contributions by prominent journalists Walter Isaacson, Michel Martin and Hari Sreenivasan from the Tisch WNET Studios at Lincoln Center in New York City.

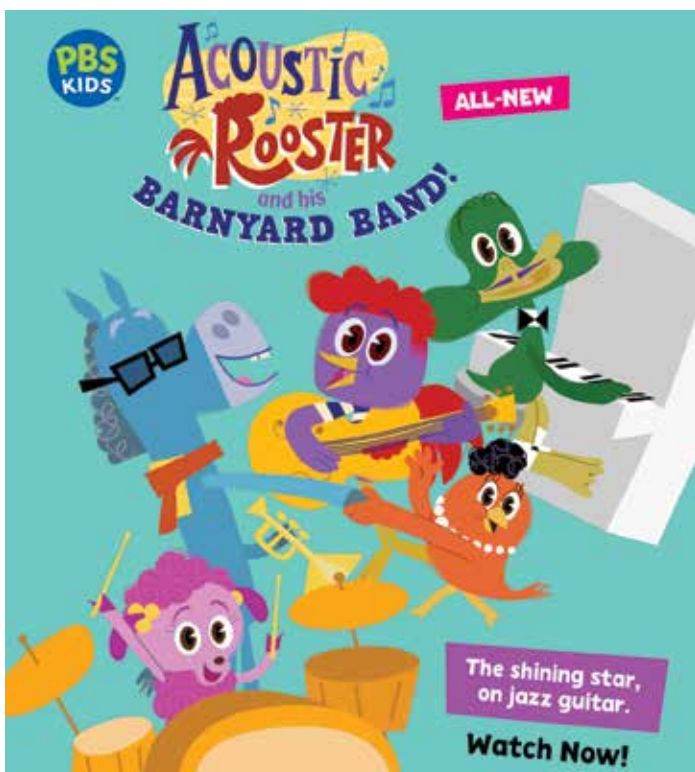




**ACOUSTIC ROOSTER AND HIS BARNYARD BAND SPECIAL**  
 One-hour Special airs May 2 at 1:30pm (encore at 9:30pm).  
 Streaming of the series starts Fri 5/9 at 6:30am.

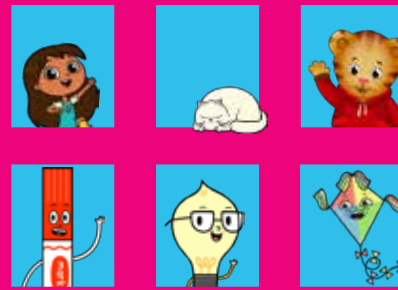
The ACOUSTIC ROOSTER series focuses on the importance of music in our everyday lives. The new PBS KIDS® animated special and series of shorts introduce a new generation of kids to the vibrant world of the arts, specifically Jazz music, while reinforcing the importance of collaboration, creativity, and self-expression. Centered on a guitar-strumming Rooster arrives at the Bebop Barnyard to join a band for the Jammin' Jazz Contest. After mastering three special Jazz skills, Rooster learns to collaborate with other musicians and becomes a member of the "Barnyard Band," learning that the heart of Jazz lies in everyone being free to play together.

PBS KIDS' first series all about music delivers a focused arts education and will teach kids about foundational music concepts and the importance of teamwork to inspire them to use their creativity as an outlet for self-expression as it opens their eyes—and ears—to the richness of Jazz. Kids will be introduced to key Jazz skills such as following the beat, call and response, and improvisation, and be exposed to various instruments and Jazz styles (like ragtime), and more.



**YOU, ME & COMMUNITY**

Watch Now  
on PBS KIDS!



Download the PBS KIDS app  
or watch however you want.

**Over the Air – 8.3; Comcast – 242;  
 Charter – 189 or 192; Google Fiber – 87**

## May/ June PBS KIDS CHANNEL WEEKDAY SCHEDULE

6:00am	Pinkalicious & Peterrific
6:30am	Acoustic Rooster
7:00am	Sesame Street
7:30am	Sesame Street
8:00am	Work It Out Wombats!
8:30am	Work it Out Wombats!
9:00am	Daniel Tiger's Neighborhood
9:30am	Daniel Tiger's Neighborhood
10:00am	Carl the Collector
10:30am	Curious George
11:00am	Donkey Hodie
11:30am	Donkey Hodie
12:00pm	Elinor Wonders Why
12:30pm	Rosie's Rules
1:00pm	Rosie's Rules
1:30pm	Xavier Riddle and the Secret Museum
2:00pm	Alma's Way
2:30pm	Alma's Way
3:00pm	Lyla in the Loop
3:30pm	Nature Cat
4:00pm	Odd Squad
4:30pm	Skillsville
5:00pm	Wild Kratts
5:30pm	Wild Kratts
6:00pm	Lyla in the Loop
6:30pm	Nature Cat
7:00pm	Molly of Denali
7:30pm	Hero Elementary
8:00pm	Cyberchase
8:30pm	Let's Go Luna!
9:00pm	Rosie's Rules
9:30pm	Xavier Riddle and the Secret Museum
10:00pm	Alma's Way



# NASHVILLE PBS HIGHLIGHTS



On March 12, Nashville PBS had the pleasure of welcoming Council Member Terry Vo, who represents District 17, the district where Nashville PBS proudly resides. During her visit to Studio B, she presented an official Nashville PBS Rebranding Proclamation, marking a meaningful milestone in our station's ongoing journey.

In her remarks, Council Member Vo recognized Nashville PBS for its longstanding commitment to addressing critical community issues and serving as a trusted source for thoughtful public discourse. She also applauded our rebrand, noting how it reflects our evolving identity within the PBS system while remaining deeply connected to the Middle Tennessee community we serve.

We are deeply grateful for Council Member Vo's recognition and continued support as we embark on this bright new chapter.



# DAYTIME SCHEDULE



## Weekday Schedule

5:00 Classical Stretch	12:00 Donkey Hodie
5:30 Yoga in Practice	12:30 Pinkalicious & Peterrific
6:00 Wild Kratts	1:00 Elinor Wonders Why
6:30 Alma's Way	1:30 Work It Out Wombats!
7:00 Lyla in the Loop	2:00 Odd Squad
7:30 Carl The Collector	2:30 Arthur
8:00 Daniel Tiger's Neighborhood	3:00 Cooking Shows
8:30 Molly of Denali	3:30 Travel Shows
9:00 At-Home Learning	4:00 NPT Favorites
11:00 Sesame Street	5:00 NPT Favorites
11:30 Rosie's Rules	6:00 PBS NewsHour

## Saturdays

5:00 Mr. Rogers' Neighborhood	12:00 America's Test Kitchen
5:30 Arthur	12:30 Cook's Country
6:00 Wild Kratts	1:00 Homemade Live!
6:30 Alma's Way	1:30 Bare Feet with Mickela Mallozzi
7:00 Lyla in the Loop	2:00 Travels with Darley
7:30 Carl The Collector	2:30 Quilting Arts
8:00 Daniel Tiger's Neighborhood	3:00 Best of Joy of Painting
8:30 Rosie's Rules	3:30 American Woodshop
9:00 Best of Sewing with Nancy	4:00 Woodsmith Shop
9:30 Fons & Porter's Love of Quilting	4:30 This Old House
10:00 Garden Smart	5:00 Ask This Old House
10:30 Pati's Mexican Table	5:30 Volunteer Woodworker
11:00 Lidia's Kitchen	6:00 PBS News Weekend
11:30 Christopher Kimball's Milk Street Television	6:30 My Music with Rhiannon Giddens

## Sundays

5:00 Mr. Rogers' Neighborhood	10:30 Nature
5:30 Arthur	11:30 Washington Week
6:00 Wild Kratts	12:00 To the Contrary
6:30 Alma's Way	12:30 Firing Line
7:00 Lyla in the Loop	1:00 Masterpiece/NPT Favorites
7:30 Carl The Collector	3:00 Samantha Brown's Places to Love
8:00 Daniel Tiger's Neighborhood	3:30 Rick Steves' Europe
8:30 Rosie's Rules	4:30 View Finders
9:00 Wild Side	5:00 Antiques Roadshow
9:30 Volunteer Gardener	6:00 PBS NewsHour Weekend
10:00 Tennessee Crossroads	6:30 NPT Originals

\*Our weekend schedule may occasionally include special programs as part of our Membership Campaign; please check our online schedule at [wnpt.org/schedule](http://wnpt.org/schedule) for the latest information, or scan the barcode above.

# MAY Primetime

\*subject to change

DATES	7:00pm	7:30pm	8:00pm	8:30pm	9:00pm
1 THU	Tennessee Crossroads	Volunteer Gardener	Tennessee Crossroads	The Vietnam War: Things Fall Apart	
2 FRI	Washington Week with the Atlantic	Firing Line with Margaret Hoover	Retro Tennessee Crossroads	Great Performances   Now Hear This: Barrios - Chopin of the Guitar	
3 SAT	Lawrence Welk Show: Music in the Skies (Kathy Sullivan)		Keeping Up Appearances: Violet's Country Cottage	Doc Martin Season 10: One Night Only	
4 SUN	Call the Midwife Season 14 - Part VI		Miss Austen on Masterpiece - Premiere		Marie Antoinette Season 2: Madame Deficit
5 MON	Antiques Roadshow: Celebrating Asian-Pacific Heritage		Antiques Roadshow: Santa Clara, Hour 3		Reel South: Black Godfather of Scuba
6 TUE	Finding Your Roots Season 8: Children of Exile		Pati Jinich Explores Panamericana: Juneau & Whitehorse - Sister Cities		FRONTLINE: Antidote
7 WED	Nature: Hummingbirds of Hollywood		NOVA   Ultimate Crash Test: Countdown		Bugs That Rule the World: Insect Apocalypse
8 THU	Tennessee Crossroads	Volunteer Gardener	Tennessee Crossroads	The Vietnam War: The Veneer of Civilization	
9 FRI	Washington Week with the Atlantic	Firing Line with Margaret Hoover	Retro Tennessee Crossroads	Great Performances: Next to Normal	
10 SAT	Lawrence Welk Show: Salute to the Ladies (Myron Floren)		Keeping Up Appearances: How to Go on Holiday	Doc Martin Season 10: How Long Has This Been Going on?	
11 SUN	Call the Midwife Season 14 - Part VII		Miss Austen on Masterpiece - Part II		Marie Antoinette - Season Finale
12 MON	Antiques Roadshow: Never Seen That Before!		Antiques Roadshow: Charleston, Hour 1		Reel South: Small Town Universe
13 TUE	Finding Your Roots Season 9: Far from Home		Pati Jinich Explores Panamericana: Alberta - Canada's Changing Heartland		Epic Train Journeys from Above
14 WED	Nature: My Garden of a Thousand Bees		NOVA   Ultimate Crash Test: Impact		Bugs That Rule the World: Lifegivers
15 THU	Tennessee Crossroads	Volunteer Gardener	Tennessee Crossroads	The Vietnam War: The History of the World	
16 FRI	Washington Week with the Atlantic	Firing Line with Margaret Hoover	Clean Slate with Becky Magura	Great Performances: Yellow Face	
17 SAT	Lawrence Welk Show: America the Beautiful (Dick Dale)		Keeping Up Appearances: Richard's New Hobby	Doc Martin Season 10: Everlasting Love	
18 SUN	Call the Midwife - Season Finale		Miss Austen on Masterpiece - Part III		Miss Austen on Masterpiece - Finale
19 MON	Antiques Roadshow: Junk in the Trunk 14		American Experience: Mr. Polaroid		Reel South: Called to the Mountains
20 TUE	Finding Your Roots Season 11: Larger Than Life		Deadlock - Premiere		FRONTLINE: Hurricane Helene's Deadly Warning
21 WED	Nature   Equus: Story of the Horse: Origins		NOVA   Decoding the Universe: Cosmos		Bugs That Rule the World: Eat or Be Eaten
22 THU	Tennessee Crossroads	Volunteer Gardener	Aging Matters: Aging with Honor	Aging Matters: Aging with Honor Panel	The Vietnam War: A Disrespectful Loyalty
23 FRI	Washington Week with the Atlantic	Firing Line with Margaret Hoover	Aging Matters: When the Gig is Up	Great Performances: Girl from the North Country	
24 SAT	Lawrence Welk Show: The Songs of Cole Porter (Anacani)		Keeping Up Appearances: The Art Exhibition	Doc Martin Season 10: Fly Me to the Moon	
25 SUN	National Memorial Day Concert 2025 - Premiere			National Memorial Day Concert 2025 - Encore	
26 MON	Antiques Roadshow: Charleston, Hour 2		Antiques Roadshow: Charleston, Hour 3		Aging Matters: Aging with Honor
27 TUE	Finding Your Roots Season 11: Stranger Than Fiction		Tyrus Wong: American Masters		
28 WED	Nature   Equus: Story of the Horse: Chasing the Wind		NOVA   Decoding the Universe: Quantum		Bugs That Rule the World: Beetle Mania
29 THU	Tennessee Crossroads	Volunteer Gardener	A Slice of the Community: The Good in Us	The Vietnam War: The Weight of Memory - Conclusion	
30 FRI	*Washington Week with the Atlantic*	Firing Line with Margaret Hoover	Clean Slate with Becky Magura	*Great Performances: Kiss Me, Kate*	
31 SAT	*Tommy Emmanuel, CGP: Live at the Sydney Opera House*			*Neil Diamond: Hot August Night/NYC*	
	7:00pm	7:30pm	8:00pm	8:30pm	9:00pm



\*subject to change

SCAN TO SEE  
THE TWO-WEEK TV  
SCHEDULE WITH  
CREATE & WORLD  
CHANNELS



DATES	9:30pm	10:00pm	10:30pm	11:00pm	11:30pm
1 THU	The Vietnam War (cont.)	1st to Fight: Pacific War Marines		BBC News	Tennessee Wild Side
2 FRI	*Classical Rewind (My Music Presents)*			BBC News	Aging Matters: Women Unseen
3 SAT	The Songwriters	Charley Crockett: Live from the Ryman		ACL 10th Annual Hall of Fame Honors Garth Brooks	
4 SUN	Marie Antoinette Season 2 (cont.)	The Paris Murders Season 2: In My Son's Name		Professor T (UK) Season 2: Ring of Fire	
5 MON	Reel South (cont.)	Independent Lens   Matter of Mind: My Alzheimer's		BBC News	Next Door Neighbors: Taste of Home
6 TUE	FRONTLINE: Antidote (cont.)		Shaking it Up: The Life and Times of Liz Carpenter		BBC News
7 WED	Bugs That Rule the World (cont.)	Spy in the Ocean, A Nature Miniseries: Deep Thinkers		BBC News	Volunteer Gardener
8 THU	The Vietnam War: The Veneer of Civilization (cont.)		Defying Death on the Atlantic		BBC News
9 FRI	Great Performances: Next to Normal (cont.)			BBC News	Aging Matters: Second Acts
10 SAT	Have Guitar Will Travel World	Marcus King: Live in Nashville		Austin City Limits: Maren Morris	
11 SUN	Marie Antoinette - Season Finale (cont.)	The Paris Murders Season 2: Until the Break of Dawn		Professor T (UK) Season 2: The Mask Murders	
12 MON	Reel South (cont.)	Independent Lens: And So it Begins			BBC News
13 TUE	Epic Train Journeys from Above (cont.)	Aging in America: Survive or Thrive		BBC News	Tennessee Crossroads
14 WED	Bugs That Rule the World (cont.)	Spy in the Ocean, A Nature Miniseries: Deep Feelings		BBC News	Volunteer Gardener
15 THU	The Vietnam War: The History of the World (cont.)		Timeless Patriotism: Guam and World War II		BBC News
16 FRI	Great Performances: Yellow Face (cont.)		Amache: An American Injustice	BBC News	Tennessee Wild Side
17 SAT	Have Guitar Will Travel World	Cyndi Lauper Live..... At Last		Austin City Limits: Pavement	
18 SUN	Miss Austen on Masterpiece - Finale (cont.)	The Paris Murders Season 2: Forever		Professor T (UK) Season 2: The Family	
19 MON	Reel South (cont.)	Independent Lens: Who is Michael Jang?		BBC News	The Citizenship Project: Cumberland Homesteads
20 TUE	FRONTLINE (cont.)	To Be Announced		BBC News	Tennessee Crossroads
21 WED	Bugs That Rule the World (cont.)	Spy in the Ocean, A Nature Miniseries: Deep Relationships		BBC News	Volunteer Gardener
22 THU	The Vietnam War: A Disrespectful Loyalty (cont.)			BBC News	Tennessee Wild Side
23 FRI	Great Performances: Girl from the North Country (cont.)			BBC News	Clean Slate with Becky Magura
24 SAT	Have Guitar Will Travel World	Chicago & Friends: Live at 55		Austin City Limits: Adrian Quesada Boleros Psicodelicos	
25 SUN	National Memorial Day Concert 2025 (cont.)	Requiem for Colour		Professor T (UK) Season 2: DNA of a Murderer	
26 MON	Miles, Morale and Memories: Bob Hope and World War II		Nashville WWII Stories		BBC News
27 TUE	American Masters   Amy Tan: Unintended Memoir				BBC News
28 WED	Bugs That Rule the World (cont.)	Spy in the Ocean, A Nature Miniseries: Deep Trouble		BBC News	Volunteer Gardener
29 THU	The Vietnam War: The Weight of Memory (cont.)		Nashville WWII Stories		BBC News
30 FRI	*Great Performances: Kiss Me, Kate* (cont.)				BBC News
31 SAT	*Neil Diamond* (cont.)	*Bee Gees: In Our Own Time*			
	9:30pm	10:00pm	10:30pm	11:00pm	11:30pm

# JUNE Primetime

\*subject to change

DATES	7:00pm	7:30pm	8:00pm	8:30pm	9:00pm
1 SUN	*The Cozy Mysteries of Masterpiece Mystery!*			*Wolf Hall: The Mirror and the Light - Reflections*	
2 MON	*60s and 70s Soul Celebration (My Music Presents)*				
3 TUE	*Rick Steves Experiencing Europe*			*Resistance: They Fought Back*	
4 WED	*Nature: The Hummingbird Effect*			*Alone in the Wilderness*	
5 THU	*Tennessee Crossroads: Smokin '*		*Tommy Emmanuel, CGP: Live at the Sydney Opera House*		
6 FRI	*Washington Week with the Atlantic*	Firing Line with Margaret Hoover	*50 Years with Peter, Paul and Mary*		
7 SAT	*Recorded Live at Analog: Molly Tuttle & Ketch Secor* (cont.)		*60s and 70s Soul Celebration (My Music Presents)*		
8 SUN	*This Land is Your Land (My Music Presents)* (cont.)		*All Creatures Great & Small: Touring the Dales*		
9 MON	*Deconstructing The Beatles*			*Tommy Emmanuel, CGP: Live at the Sydney Opera House*	
10 TUE	*Ken Burns: The National Parks*				*Ken Burns: The Civil War*
11 WED	*Great Scenic Railway Journeys 30th Anniversary Special*				*The Mustangs: America's Wild Horses*
12 THU	*Tennessee Crossroads: Sweet Treats*		*50 Years with Peter, Paul and Mary*		
13 FRI	Washington Week with the Atlantic	Firing Line with Margaret Hoover	*60s and 70s Soul Celebration (My Music Presents)*		
14 SAT	*Lawrence Welk: God Bless America* (cont.)				*Bruce Springsteen & The E Street Band*
15 SUN	Patience: Paper Mountain Girl, Part I - Premiere		Grantchester Season 10 - Premiere		Atlantic Crossing on Masterpiece: The Attack
16 MON	Walking with Dinosaurs: The Orphan - Premiere		Walking with Dinosaurs: The River Dragon		Nature: Museum Alive with David Attenborough
17 TUE	Walking with Dinosaurs: Band of Brothers		Walking with Dinosaurs: The Pack		Nature: Attenborough and the Jurassic Sea Monster
18 WED	Walking with Dinosaurs: Island of Giants		Walking with Dinosaurs: The Journey North		NOVA: Alaskan Dinosaurs
19 THU	Tennessee Crossroads	Volunteer Gardener	Tennessee Crossroads	Prohibition: A Nation of Drunkards	
20 FRI	Washington Week with the Atlantic	Firing Line with Margaret Hoover	To Be Announced	American Masters   Janis Ian: Breaking Silence	
21 SAT	Lawrence Welk Show: Summer Sounds (Peggy Lennon)		Keeping Up Appearances	Doc Martin Season 10: Return to Sender	
22 SUN	Patience: Paper Mountain Girl, Part II		Grantchester Season 10 - Part II		Atlantic Crossing on Masterpiece: The Throne
23 MON	Antiques Roadshow: Chicago, Hour 2		Requiem for Colour		To Be Announced
24 TUE	Finding Your Roots Season 9: Secret Lives		Caregiving		
25 WED	Walking with Dinosaurs: The Orphan - Encore		Human Footprint Season 2: Shelf Life		NOVA: Great Mammoth Mystery
26 THU	Tennessee Crossroads	Volunteer Gardener	Next Door Neighbors: Food for Thought	Prohibition: A Nation of Scofflaws	
27 FRI	Washington Week with the Atlantic	Firing Line with Margaret Hoover	To Be Announced	American Masters   Hannah Arendt: Facing Tyranny	
28 SAT	Lawrence Welk Show: Thank You, America (Bobby Burgess)		Keeping Up Appearances: A Job for Richard	Doc Martin Season 10: Love Will Set You Free	
29 SUN	Patience: The Missing Link		Grantchester Season 10 - Part III		Atlantic Crossing: Crossing the Atlantic
30 MON	Antiques Roadshow: New York City, Hour 1		Antiques Roadshow: New York City, Hour 2		To Be Announced
	7:00pm	7:30pm	8:00pm	8:30pm	9:00pm



\*subject to change

SCAN TO SEE  
THE TWO-WEEK TV  
SCHEDULE WITH  
CREATE & WORLD  
CHANNELS



DATES	9:30pm	10:00pm	10:30pm	11:00pm	11:30pm
1 SUN	<i>*Wolf Hall: The Mirror and the Light* (cont.)</i>	<i>*The All New Rock, Pop and Doo Wop (My Music Presents)*</i>			
2 MON	<i>*60s and 70s Soul Celebration* (cont.)</i>	<i>*Aretha! with Shelea and the Pacific Symphony*</i>			<i>*Supercharge Your Brain*</i>
3 TUE	<i>*Resistance: They Fought Back* (cont.)</i>			<i>*Rick Steves Experiencing Europe*</i>	
4 WED	<i>*Alone in the Wilderness* (cont.)</i>	<i>*Memory Makeover with Daniel Amen, MD*</i>			
5 THU	<i>*Recorded Live at Analog: Molly Tuttle &amp; Ketch Secor*</i>			<i>*Kris Kristofferson: Life &amp; Songs*</i>	
6 FRI	<i>*50 Years with Peter, Paul and Mary* (cont.)</i>	<i>*Neil Diamond: Hot August Night/NYC*</i>			<i>*The All New Rock, Pop and Doo Wop*</i>
7 SAT	<i>*60s and 70s Soul Celebration (My Music Presents)* (cont.)</i>			<i>*The Commodores Live*</i>	
8 SUN	<i>*All Creatures Great &amp; Small* (cont.)</i>	<i>*Bee Gees: In Our Own Time*</i>			
9 MON	<i>*Tommy Emmanuel, CGP* (cont.)</i>	<i>*60s and 70s Soul Celebration (My Music Presents)*</i>			
10 TUE	<i>*Ken Burns: The Civil War* (cont.)</i>			<i>*Great Scenic Railway Journeys 30th Anniversary Special*</i>	
11 WED	<i>*The Mustangs: America's Wild Horses* (cont.)</i>			<i>*Ken Burns: The National Parks*</i>	
12 THU	<i>*50 Years with Peter, Paul and Mary* (cont.)</i>	<i>*Ken Burns: Country Music*</i>			
13 FRI	<i>*60s and 70s Soul Celebration (My Music Presents)* (cont.)</i>			<i>*Deconstructing The Beatles*</i>	
14 SAT	<i>*Bruce Springsteen &amp; The E Street Band - No Nukes* (cont.)</i>			<i>*This Land is Your Land (My Music)*</i>	
15 SUN	Atlantic Crossing on Masterpiece (cont.)	Lucy Worsley's Royal Photo Album		Professor T (UK) Season 2: The Trial	
16 MON	Nature (cont.)	Nature: Attenborough and the Sea Dragon		BBC News	To Be Announced
17 TUE	Nature (cont.)	NOVA   Dinosaur Apocalypse: The New Evidence		BBC News	Tennessee Crossroads
18 WED	NOVA (cont.)	NOVA   Dinosaur Apocalypse: The Last Day		BBC News	Volunteer Gardener
19 THU	Prohibition: A Nation of Drunkards (cont.)		Al Capone: Icon		BBC News
20 FRI	American Masters   Janis Ian: Breaking Silence (cont.)		Prideland		BBC News
21 SAT	Have Guitar Will Travel World	City of Songs: Austin	Papa Ray's Vintage Vinyl Roadshow	Austin City Limits: Japanese Breakfast/Arlo Parks	
22 SUN	Atlantic Crossing on Masterpiece (cont.)	Sisi: Austrian Empress Season 2 - Premiere		Professor T (UK) - Season Finale	
23 MON	To Be Announced (cont.)	POV (TBA)		BBC News	To Be Announced
24 TUE	Caregiving (cont.)	Aging Matters: Caregiving	Aging Matters: Reimagining Long-Term Care	BBC News	Tennessee Crossroads
25 WED	NOVA (cont.)	Passage			BBC News
26 THU	Prohibition: A Nation of Scofflaws (cont.)		The Real McCoy		BBC News
27 FRI	American Masters (cont.)	American Masters: Groucho & Cavett			BBC News
28 SAT	Have Guitar Will Travel World	City of Songs: Barcelona	Papa Ray's Vintage Vinyl Roadshow	Austin City Limits: Jorge Drexler	
29 SUN	Atlantic Crossing on Masterpiece (cont.)	Sisi: Austrian Empress Season 2 - Part II		Professor T (UK) Season 3: Heir to the Throne	
30 MON	To Be Announced (cont.)	POV (TBA)		BBC News	To Be Announced
	9:30pm	10:00pm	10:30pm	11:00pm	11:30pm

# STORIES THAT DEFINE US

## SPOTLIGHT – RACHEL RODRIGUEZ

by Carolyn Adkerson



*Rachel Rodriguez commands the stage with the same fearless spirit that defines her music – a fusion of her Latino heritage, rock 'n' roll attitude, and soulful vocals – defying genre boundaries. Rachel refuses to be boxed in, creating a sound that is both deeply personal and universally resonant. Raised in Michigan, belting Mariachi and Country in her father's band, Rachel carried her musical vision to Nashville. She has since established herself as an electrifying frontwoman known for raw, truth-telling performances.*

*Her upcoming album 'Mi Vida' chronicles the bold journey of a woman claiming her power. The songs encourage everyone to follow their passions unapologetically at every stage of life. Her artistry pays homage to her musical roots and draws inspiration from the power and authenticity of influential artists like Linda Ronstadt, Los Lobos, and Tina Turner.*

*Her musical versatility extends beyond the stage. She is the creator of Songs for My Little Amigos, a bilingual children's music program, and co-founder of Magenta Expression, where she mentors emerging artists. These parallel paths reflect her commitment to cultural celebration and community building through music.*

*Rachel's impact in the music industry has earned recognition from the Women's Music Business Association and numerous arts organizations. She serves on multiple boards including The Entrepreneur Latina Leaders of America (E.L.L.A.), while mentoring for Girls Write Nashville and GRAMMY U.*

*Whether performing on stage or championing arts education, Rachel strives to uplift others by fostering expression, creativity, and cultural connection. With every endeavor, she uses her platform to inspire, educate, and bring people together.*

**Carolyn Adkerson (CA):** Rachel, I'm so glad to connect. Let's start with who you are and the work you do.

**Rachel Rodriguez (RR):** I'm an early childhood education specialist working with Metro Nashville Public Schools. I'm also a singer-songwriter and bilingual performer, blending music with literacy and family engagement. Over the years, I've worked across various organizations, including the Country Music Hall of Fame, Monroe Carell, Jr. Children's Hospital at Vanderbilt and the Tennessee Performing Arts Center. My passion lies in creating joyful, educational experiences for families through music and language.

**CA:** That's such an incredible mix of talent and purpose. How has PBS or Nashville PBS been part of your journey?

**RR:** Definitely in different phases of my life. As a child, Mr. Rogers was a huge part of my early learning. His calm, intentional messaging really stuck with me. Then as a mother, I watched Sesame Street—especially in Spanish—as I tried to raise bilingual children. We watched in English and Spanish when possible. And now, professionally, I love what Nashville PBS is doing with family engagement and culturally inclusive programming.

**CA:** What has your partnership with Nashville PBS looked like?

**RR:** We've partnered through a range of outreach events—block parties, community festivals, and family literacy nights—where I provide bilingual music and storytelling. It's been amazing to meet families where they are, and to offer joyful, educational content that bridges language and cultural gaps. Nashville PBS has been so open-minded, always willing to find new ways to reach people and create welcoming spaces.

**CA:** That's what we aim for. What do you hope comes from this collaboration?

**RR:** I hope to continue to collaborate and partner with Nashville PBS. I love their family engagement. I love that they offer the city their willingness to expand and be open-minded about other options and approaches to learning and growing—bringing community together with family activities, celebrating diversity, and finding ways to engage the many populations we have here. We have a very diverse population in Nashville. Whether it's working with Seacrest Studios at Monroe Carell, Jr. Children's Hospital at Vanderbilt to bring bilingual books and programs to young patients, or connecting Nashville PBS with Casa Azafran Early Learning Center as well as the Hispanic Family Foundation and Plaza Mariachi, I want to continue bridging communities. That's my mission and my passion.

**CA:** As Nashville PBS steps into a new era with our rebrand and a bright new chapter, what do you hope we carry forward?

**RR:** Keep leading with empathy, building community, and celebrating culture. Continue expanding programming that reflects the families you serve—especially Spanish-speaking communities. There's such an opportunity to uplift joy and language through music, stories, and authentic engagement. I hope Nashville PBS keeps being a light in the city—offering education, connection, and creativity for every family?

**CA:** Any final words you want to leave with the community?

**RR:** I hope to inspire other women, especially moms that feel like, Oh my gosh. How am I going to do this... motherhood and chasing down dreams? There are so many things I want to do, but my family is always my priority, so I understand that deeply. And hopefully doing this releasing my new album, "Mi Vida", and my new children's book, "Music City Museums" at this time in my life, will let other people know, hey—it's okay. Enjoy being a mom and be in it, because that time will pass and you cannot turn back time. But projects, and music, and whatever it might be that your dreams are—you can pick them back up at any age.



## Support Nashville PBS Become a Member Today!

### Nashville PBS Membership (\$40–\$499)

At the \$60+ level, you'll have access to Nashville PBS Passport, an online library of your favorite Nashville PBS and PBS programs. Plus you'll receive invitations to exclusive member's only previews and screenings of productions and shows. You'll also keep up with the latest shows and events when you receive our online newsletter, "Nashville PBS This Week."

### Director's Society (\$500–\$999)

Includes all Basic Membership privileges plus:

Invitations to exclusive member's only previews and screenings of productions and shows;  
Invitations to selected Nashville PBS special events (lectures, concert tapings and celebrity appearances); Optional listing in the Annual Report to the Community.

### Producer's Society (\$1,000–\$2,999)

Includes all Basic Membership privileges plus:

Optional acknowledgement in Nashville PBS Producers' Society listing in Annual Report to the Community;  
Invitations to Producer's Society events and socials;  
Optional listing in the Annual Report to the Community.

### Leadership Circle (\$2,500–\$4,999)

Includes all privileges listed above plus:

Optional acknowledgement in the main lobby of Nashville PBS offices;  
Invitations to Leadership Circle events and socials;  
Optional listing in Annual Report to the Community.

### Broadcaster's Circle (\$5,000–\$9,999)

Includes all privileges listed above plus:

Attend live and on location filming of local productions;  
Private tours of Nashville PBS studios upon request;  
Invitation to attend roundtable meeting with the Nashville PBS President and CEO;  
A gift of PBS video to other non-profit organizations of your choice upon request;  
Complimentary copies of original Nashville PBS productions;  
On Air recognition of Broadcaster's Circle members.

### Masterpiece Guild (\$10,000+)

Includes all privileges listed above plus:

Annual use of the Nashville PBS Boardroom for private functions, arranged upon request;  
On-air program recognition and sponsorship credit;  
Opportunity for on air testimonial supporting Nashville PBS and other local non-profit organizations;  
Complimentary tickets to select events throughout the year.

Nashville PBS  
wnpt.org/support



Begin a new adventure.  
Donate your used car, motorcycle, or RV.

## FUNDING PARTNERS

Nashville PBS salutes our major foundation and corporate funding partners whose generosity makes possible the programming and services that we provide to Middle Tennessee.

### Aging Matters

HCA Healthcare Foundation  
The Jeanette Travis Foundation  
West End Home Foundation

### Ask This Old House

Maria and Bernard A. Pargh Family Foundation

### Made in the West

Carlene Lebus and Harris Haston

### Next Door Neighbors

Nissan Foundation

### Learning to Read

Dollar General Literacy Foundation

### Media Literacy Project

Dollar General Literacy Foundation  
The Marlene and Spencer Hays Foundation

### A Word on Words

James Stephen Turner Family Foundation

### Arts Break

Martha Rivers Ingram Advised Fund of the  
Community Foundation of Middle Tennessee  
Ingram Industries  
Tennessee Arts Commission

### Tennessee Crossroads

Middle Tennessee State University  
Tennessee Department of  
Tourist Development  
Tennessee Farmers Cooperative  
Virginia, James and Jason Feltner  
Family Foundation

### Volunteer Gardener

Virginia, James and Jason Feltner  
Family Foundation  
Ms. Michelle Haynes

### The Lawrence Welk Show

Virginia, James and Jason Feltner  
Family Foundation

### General Support

Crosslin & Associates  
Dr. and Mrs. Howard S. Kirshner  
Inka Goell-Odom  
Tennessee Lottery

Nashville  PBS

@ Nashville Public Television  
161 Rains Avenue  
Nashville, TN, 37203  
[WNPT.org](http://WNPT.org)

PLEASE RECYCLE



NONPROFIT ORG  
U.S. POSTAGE PAID  
NASHVILLE PBS  
35203

**DID YOU  
KNOW?**

PBS is always free.  
Over-the-air, online  
and on the PBS app.



1 million+ teachers  
access PBS LearningMedia  
every month.



**YOU CAN HELP**

[protectmypublicmedia.org](http://protectmypublicmedia.org)

