



NARRATED BY  
TANYA TUCKER

MADE IN THE  
**WEST**

**MASTERPIECE PRESENTS "THE FORSYTES"**

Desire, ambition and betrayal simmer at the heart of this highly-anticipated drama, premiering Sunday, March 22.



**SENIOR STAFF**

Becky Magura, *President & CEO*  
 Marianne Monoc, *Chief Development Officer*  
 Dale Baker, *Sr. Director of Engineering*  
 McKenly Blair, *Sr. Director of Human Resources*  
 Shane Burkeen, *Sr. Director of Digital, Brand and Marketing*  
 Megan Grisolano, *Executive Producer & Sr. Director of Content*  
 MiChelle Jones, *Director of Communications*  
 Samantha Andrews, *Director of Education & Engagement*  
 Dr. Sarah Childress, *Director of Strategy & Operations*  
 Sheila Fischer, *Director of Development*  
 Paul Mojonier, *Director of Production*

**BOARD OF DIRECTORS**

Perri duGard Owens, *Chair*  
 Sarah Teague, *Immediate Past Chair*  
 Jennifer Biefel, *Vice Chair / Programming Committee Chair*  
 Brian W. Zempel, *Treasurer / Fin. Com. Chair*  
 Melinda Hudgins Noblitt, *CMD, Secretary*  
 Richard Warren, *Development Committee Chair*  
 Scott Carey, *Nominating Committee Chair*  
 Becky Magura, *President & CEO*  
 Scott Becker  
 Chris Boyd  
 Brian Brockman  
 David Campbell  
 Nicole Carter  
 Sophia Chaidez  
 Melanie Drudge  
 Demetria Kalodimos  
 Dr. David J. Kennedy  
 Michael Malesick  
 Mark Manley  
 Renee Monterio  
 Rebecca Paul  
 Amy Cox Williams  
 Sally Williams  
 Carlene Lebus, *Emeritus*

**COMMUNITY ADVISORY BOARD**

Les Kerr, *Chairman*  
 Jay McDowell, *Vice Chair*  
 Dr. Carolyn Adkerson  
 Penny Brink  
 Karen Lynn Coffee  
 Paula Daigle  
 Erica Francescon  
 William Courtney Fullum II  
 Yolanda Hockett  
 Eve Hutcherson  
 Les Kerr  
 Cameron McCasland  
 Jay McDowell  
 LaTonya Moore  
 Emma Shanahan  
 Belinda Shillingburg  
 Tina Stoyka  
 Asailio "Ace" Timmermeier  
 Tabeer Taabur  
 Lorenzo Washington

Dr. Carolyn Adkerson - *Managing Editor* – [editor@wnpt.org](mailto:editor@wnpt.org)  
 Printed by a Nashville Company, R.H. Boyd Publishing Company

For on-air and print advertising and promotion, contact  
 Derek Anderson at 615.406.9625 or [danderson@wnpt.org](mailto:danderson@wnpt.org)

**WELCOME TO YOUR  
 Nashville PBS**

- 03 Upcoming Events
- 04 For The Love of Nashville, Becky Magura, President & CEO
- 05 National Spotlight: Shane Burkeen of Nashville PBS
- 06 Made in The West
- 07 Tennessee Crossroads/Tennessee Parks
- 07 A Word on Words
- 08 Community Survey Results
- 09 Nashville PBS as the Presenting Station for "Down the Duck"
- 10 Nashville PBS in the Neighborhood
- 12 Partner Spotlight
- 14 Download the Nashville PBS App & the PBS App
- 16 PBS Highlights
- 18 Membership Special Highlights
- 19 Create and WORLD Channels
- 20 PBS KIDS Games
- 20 PBS KIDS Channel Schedule
- 21 The Nashville PBS App
- 21 Daytime Schedule
- 22 Primetime for March and April
- 26 Viewers Like Me
- 27 Tax Changes & Charitable Donations
- 27 Nashville PBS Pet Club
- 27 Donate Your Vehicle to Nashville PBS



**MADE IN THE WEST**

**Premieres Sun, Jan 11**

A co-production of Nashville PBS and Wyoming PBS, the film journeys into the workshops of master artisans who transform raw materials into functional works of art, from hand-tooled leather and forged steel to heirloom furniture built to last generations. As tradition meets innovation, the program explores how these makers preserve a distinctly American legacy while shaping its future. A visually rich tribute to skill, heritage, and the art of making something built to endure.

**Story on Page 6**



**CHANNEL GUIDE & SERVICE PROVIDERS**

SERVICE PROVIDER	Nashville PBS	WORLD	PBS KIDS	create
Over-the-Air	8.1	8.2	8.3	8.4
Charter	8	176	189 or 192	190, 192, 193
Comcast-Xfinity	8, 1008	241	242	256, 1161
DirecTV	8	NA	288	NA
DirecTV-Stream	8	NA	288	NA
YouTube	8	NA	NA	NA
U-Verse	8, 1008	NA	NA	NA
TDS	8, 1008	NA	NA	NA
LightTube	8	NA	NA	NA

**ALL-ARTS** is available to watch at [allarts.org](http://allarts.org)

Nashville  PBS

# UPCOMING

## Events

MAR  
(FRI)

6

### LUNCH & LEARN: BRIAN SHELTON

11:00 AM - 12:00 PM @ NASHVILLE PBS  
161 RAINS AVENUE, NASHVILLE, TN 37203

MAR  
(WED)

18

### CHARLEY PRIDE FREE SCREENING

5:30 PM RECEPTION/ 6:00 PM SCREENING  
THE ROOTS THEATER, NATIONAL MUSEUM OF  
AFRICAN AMERICAN MUSIC (NMAAM),  
510 BROADWAY, NASHVILLE, TN 37203

MAR  
(WED)

18

### FIFTY FORWARD LAVERGNE

10:00 AM **SHOWING:** WOMEN UNSEEN  
337 STONES RIVER RD., LAVERGNE, TN 37086

MAR  
(THURS)

26

### A SLICE OF THE COMMUNITY LIVE

6-7 PM @ NASHVILLE PBS  
161 RAINS AVENUE, NASHVILLE, TN 37203

APR  
(THURS)

16

### FIFTY FORWARD BORDEAUX

11:00 AM **SHOWING:** EXPOSING CYBER THREATS  
1010 CAMILLA CALDWELL LN, NASHVILLE, TN 37218



VISIT [WWW.WNPT.ORG/EVENTS](http://WWW.WNPT.ORG/EVENTS)  
TO LEARN MORE & RSVP



At the Wyoming screening of MADE IN THE WEST. L-R; Becky Magura; Jessica Best; Megan Grisolano; Joanna Kail; and Paul Mojonnier

## FOR THE LOVE OF NASHVILLE

**Becky Magura**

President & CEO of Nashville PBS

Thank you Nashville, for your amazing support. As I write this, we are over halfway towards filling the gap left by the loss in federal funding. You have been there for Nashville PBS by becoming new donors, renewing your membership, or joining as sustaining members. In fact, you almost doubled our major donor portfolio! Every dollar raised through individual giving goes directly to content acquisition from PBS, Create, WORLD and PBS Kids.

Thank you as well to the State of Tennessee Department of Education for an annual grant. That money helps us provide locally produced and acquired content, maintain our technical infrastructure, and funds the extensive work our team does in education and community engagement. It also enables us to air our daily education block and the gavel-to-gavel coverage of the Tennessee General Assembly on our World Channel.

The recent ice storm presented a different kind of challenge. Our extraordinary engineering and technical teams went above and beyond. While we lost transmission for a brief time due to ice in the studio/transmitter link, the tower crew managed to fix the problem. Ice at a transmitter is never a good thing, especially at 350 feet in the air!

Even with all of the challenges, there have been celebrations. We recently screened our new documentary, MADE IN THE WEST, at the Frist Art Museum (see story on page 6 and watch the film on Monday, March 23 at 8pm). The film was a collaborative project with Wyoming PBS, and we were thrilled to have special guests from Wyoming visit. Special thanks to Harris Haston and Carlene Lebus for hosting the event.

March will be the first month without the support of the Corporation for Public Broadcasting (CPB). The men and women of CPB dedicated so much to the betterment of our American society for 60 years, and the Public Broadcasting Act is still as relevant today as it was at its inception in 1967.

I want to especially thank Patricia Harrison, President and CEO of CPB. Pat has been an amazing champion for our industry, and she's been an inspirational leader, mentor and friend. She cares about the PBS stations, and made sure we all had access to quality content, as well as emergency life saving communication and technology. We will miss CPB, but my hope is that we will continue to live the legacy that they shared. Thank you to Pat, Ruby and all at CPB for your tireless fight on our behalf. We love you!

In her remarks at the final meeting of the Corporation for Public Broadcasting Board of Directors, CPB President and CEO, Patricia Harrison shared this powerful and uplifting statement to remind us that we each play a part in our more perfect union...

"I can't even express the honor I have had to be part of CPB's work and legacy, and . . . that is why I am not sad, exactly. What gets rid of that sadness, or that "what can we possibly do?" feeling . . . is action . . . It's thinking how you can contribute, what you can do. It requires commitment and another important element, courage. You've got to muster the courage to fight for what you believe in . . ."

*Becky*





## NATIONAL SPOTLIGHT

### Shane Burkeen of Nashville PBS

Written by: Paula Garcia, PBS Station Products & Initiatives

Abridged by Dr. Carolyn Adkerson

Recognized in PBS Hub's national "Tuning In" series, Shane Burkeen is helping shape the future of public media through innovation grounded in empathy, accessibility, and service.

In a recent PBS Hub feature, Shane was recognized for the thoughtful and forward-looking leadership he brings to public media. His work at Nashville PBS reflects a belief that innovation should never come at the expense of humanity — and that technology, when used well, can deepen connection rather than replace it.

***"I've always believed that if I don't know how to do something, I can learn—and if I can help someone else along the way, even better."***

Raised in Western Kentucky, where PBS was often the only available station, Shane developed an early appreciation for the power of access. That foundation shaped a career defined less by a straight line and more by purpose. Before arriving at Nashville PBS, his path included studying for the priesthood, working in an HIV clinic supporting patients through deeply personal challenges, and building digital storytelling capacity in the nonprofit arts sector. Across every chapter, the throughline remained the same: listen closely, learn constantly, and help people where they are.



Today, as Senior Director of Brand, Digital, and Marketing, Shane stands at the intersection of creativity and strategy. He helped guide the station's rebrand from NPT to Nashville PBS and has championed digital-first storytelling initiatives that expand reach while preserving trust. His work has demonstrated that experimentation and stewardship can coexist.

The PBS Hub profile also highlights Shane's careful and ethical approach to emerging technologies. He sees artificial intelligence not as a shortcut, but as a support system — one that creates space for stronger ideas, greater efficiency, and improved accessibility.

***"AI should support human creativity, not replace it."***

Beyond innovation, Shane has prioritized audience experience. From reimagining set design through cost-efficient digital concepting to developing tools that make decades of station content more discoverable, his work reflects a commitment to making public media easier to navigate and more inclusive.

What resonates most across the PBS system, however, is Shane's generosity. He speaks openly about learning curves, shares knowledge freely, and believes that progress is most meaningful when it brings others along. In both leadership and life, Shane's approach is simple but powerful: embrace change, stay curious, and serve first.



***Preserving uniquely American functional art and career paths***

MADE IN THE WEST, a co-production of Nashville PBS and Wyoming PBS, and narrated by Tanya Tucker, is a deep dive into western functional art: artwork that serves a practical purpose, from furniture to household items, tools and clothing. Through interviews with artisans, historians, collectors, ranch owners, university faculty members, and students, MADE IN THE WEST covers the impact of Native Americans, Buffalo Bill, Thomas Molesworth, and popular entertainment in the romanticism of the West and what is considered western style.

While the film focuses on the western aesthetic, historians and artisans alike clarify that it is merely a case study for American functional art across the United States where the pieces reflect the landscape, wildlife, and lifestyle of the region, including Tennessee.

It's not unusual for premium western functional art to have a five-figure price tag, but that doesn't mean that artisans are coming out of the woodwork to take advantage of this high-end market. There are steep barriers to entry. Some clients wait months or even years for custom-made pieces, and the future supply of western functional art may be even more limited as many of today's master craftsmen are aging out of the craft.

In the small town of Cody, Wyoming, community leaders and master artisans joined forces to launch a nonprofit organization in 2015 called *By Western Hands* with the mission of educating,

perpetuating, and conserving the legacy of American western functional art and design.

*By Western Hands* recognizes the importance of exposing younger generations to the possibility of a career in the functional arts. With this goal in mind, they have partnered with the University of Wyoming to support arts curriculum with hands-on workshops led by master craftsmen. This is a model that could be replicated at other higher institutions throughout the country.

There is a path for the preservation of this uniquely beautiful and soul-fulfilling craftsmanship, but it will not be forged without increased awareness of what is at stake.

The goal of this production project is to increase knowledge and appreciation of American functional art as well as awareness of the artistic trades as a career path for younger generations. To achieve this, Nashville PBS and Wyoming PBS have partnered to create content for multiple platforms.

In addition to the one-hour film premiering on broadcast television, Nashville PBS and Wyoming PBS produced 21 digital-first videos with content not included in the film. Eight of these videos are vertical and optimized for YouTube shorts and Instagram reels. A new MADE IN THE WEST digital-first video will be released on Nashville PBS's YouTube channel every weekday in March.

MADE IN THE WEST was made possible by Carlene Lebous, The Thomas and Elizabeth Grainger Family Charitable Fund, Naoma Tate, AllianceBernstein, the state of Wyoming by and through the Wyoming Cultural Trust Fund, Carolyn and Scott Heppel, Rocky Mountain Power Foundation, and First Horizon Foundation.



Cumberland Mountain State Park



In December, TENNESSEE CROSSROADS added a new producer to its roster. Acclaimed author and photographer John Guider began a five-year project to visit state parks across the state and share interviews and photos as part of a series of segments highlighting some of the most beautiful locations in Tennessee.

Each segment features a state park ranger who tells the story of the park's history and gives viewers a virtual tour of what the park has to offer. Shot completely by John, his magnificent photos really bring the story to life. So far, John has visited Fall Creek Falls, Roan Mountain, and Cumberland Mountain State Parks with dozens more to come.

# A Word on Words

For readers, writers, and anyone who has ever loved—or struggled to love—a book, A WORD ON WORDS returns for its 11th season with another dynamic lineup of authors and conversations that celebrate storytelling, creativity, and the power of literacy.

Since launching in 2015, A WORD ON WORDS has connected audiences with writers through thoughtful, accessible interviews that explore not only new books, but the ideas, experiences, and inspirations behind them. Hosted by bestselling author J.T. Ellison and award-winning writer Jeremy Finley, the series invites viewers into honest conversations that make reading feel relevant, personal, and attainable.

Season 11 features an exciting and diverse group of voices spanning fiction, nonfiction, history, and young adult literature.

This season's authors and books include: Andrew Lawler, *A Perfect Frenzy*; Ruth Reichl, *The Paris Novel*; Ruben Reyes Jr., *Archive of Unknown Universes*; Julie Clark, The Ghostwriter Adam Godfrey, *Body of Water*; Jessa Crispin, *What Is Wrong with Men?*; Rob Franklin, *Great Black Hope*; Beatriz Williams, *Under the Stars*; Ashley Winstead, *This Book Will Bury Me*; Alexis Okeowo, *Blessings and Disasters*; Carson Faust, *If the Dead Belong Here*; Michael Thomas, *The Broken King*; Alix E. Harrow, *The Everlasting*; and Andrew Greer, *More than a President*.

As part of its ongoing commitment to literacy, five episodes each season focus on young adult authors and books, spotlighting relatable voices and stories designed to engage teens and young adults and inspire a lifelong love of reading.

Viewers can watch A WORD ON WORDS in multiple ways. Episodes air on Nashville PBS, with video segments available on the PBS app and YouTube, and full-length interviews released as podcasts on all major podcast platforms—making it easy to discover great books wherever and however audiences prefer to listen and watch. Whether you're looking for your next read or simply enjoy hearing writers talk about their craft, Season 11 of A WORD ON WORDS offers smart, welcoming conversations that remind us why stories matter.



# NASHVILLE PBS

## COMMUNITY SURVEY RESULTS

Nashville PBS is always looking for ways to listen to the needs and interests of our community members in order to fine-tune our work within the region. We value community feedback, and being able to show data on our community members' perceptions and preferences helps us make a case for support to sustain the work we do at Nashville PBS. We analyze responses and share the results with our internal departments, board of directors, and Community Advisory Board. The information we receive affects our local content, programming, messaging, and case for support.

We are learning from what heard from community members and encourage you to take our 2026 Community Survey when it comes out later this year.

### Number of Participants

This year, 248 community members answered our community survey. Five winners received Nashville PBS swag and one year of access to Nashville PBS Passport.

### Important Community Issues

According to respondents, education, social justice, and health/healthcare are among the most important community issues for Nashville PBS to address in local content like AGING MATTERS, THE CITIZENSHIP PROJECT, NEXT DOOR NEIGHBORS, CLEAN SLATE WITH BECKY MAGURA, and A SLICE OF THE COMMUNITY.

### Creating Awareness

Nashville PBS' producers always strive to create content that increases awareness, understanding, conversation, and positive action around community issues, and 74% of community survey respondents state that they had a conversation with someone regarding something they viewed on Nashville PBS.

### Trust & Representation

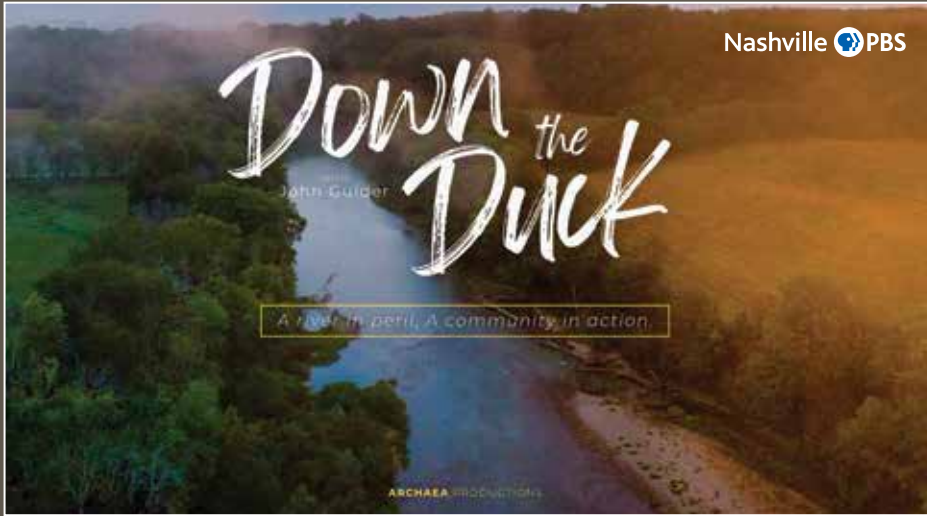
Trust and representation are paramount to our ethos at Nashville PBS. 83% of community survey respondents agree that Nashville PBS is a trustworthy media voice on-air, online, in print and in the community while 75% of community survey respondents agree that Nashville PBS' content represents the diversity of experiences of all people throughout the region.

### Awareness of PBS App

While the free PBS app debuted on Apple's App Store in 2011, according to our survey data, a significant number of our viewers are still not aware of it. Nearly 20% of respondents state that they have never heard of the PBS app, and 44% state they have heard of the app but have not downloaded it. If you have not downloaded the free PBS app, we encourage you to do so today to watch our content on demand. Encourage your friends and family to do the same, and don't forget about the free PBS KIDS app for youth.

### Community Events

We have found events are a growth area for Nashville PBS. We are a community connector with a vast network of partners we collaborate with on numerous events year-round. We also have a monthly live A Slice of the Community taping in our studio the last Thursday of most months, numerous screening events per year, our annual Tennessee Crossroads Whiskey Tasting, and more; however, 70% of our survey respondents state they have never attended a Nashville PBS event. You can see what events we offer at any time at [wnpt.org/events](http://wnpt.org/events).



# DOWN THE DUCK

Premieres Fri, April 6 at 8pm

Tennessee's Duck River is on the list of America's Most Endangered Rivers®. John Guider paddled 270 miles down the Duck River on a camping and canoe expedition, where he discovered history, community and a river in peril. His journey focused attention on the value and importance of the river while also raising awareness about the threat.

## Local & National Presenting Station

Nashville PBS is a Presenting Station – a PBS station that presents independently produced films and series to local, state, or national audiences. Nashville PBS provides guidance, resources, and a distribution pathway to local independent producers as part of our mission to connect Nashville and beyond with trusted content that reflects, strengthens, and celebrates our community. We're proud to support DOWN THE DUCK and the work of other Middle Tennessee storytellers to help them share our stories with the rest of the country.

Our national presenting station programs have recently included:

BRENDA LEE: ROCKIN' ROUND:  
AMERICAN MASTERS

RECORDED LIVE AT ANALOG  
(Seasons 1 & 2)

FUZZ

THE LIVING LAND

THE COST OF CARING

HAVE GUITAR WILL TRAVEL WORLD

VOLUNTEER WOODWORKER

AGING MATTERS: UNHOUSED

A WORD ON WORDS (Season 9)

HEARTS IN HARMONY

MUSICIANS HALL OF FAME  
INDUCTION CEREMONY  
AND CONCERT

THE SONGWRITERS (Season 3)



Learn about Tennessee's native species, history, and culture—delivered six times per year!

100% recycled paper • Colorful photography • Real Tennessee stories.



Your guide to the great outdoors.  
SUBSCRIPTIONS at [tnconservationist.org](http://tnconservationist.org)



WATCH NOW  
WITH THE FREE PBS APP\*



# NASHVILLE PBS IN THE NEIGHBORHOOD

Photo Credit Marvin Rutherford Jr.



# NASHVILLE PBS IN THE NEIGHBORHOOD





## INTERN SPOTLIGHT

“Hi my name is Katherine Luttrull and I am a senior at Harpeth Hall school. Harpeth Hall believes in giving students the opportunity for experiential learning. In January, Junior and Senior year students had the opportunity to either travel on academic trips around the globe or partake in an internship in Nashville or DC.

For my senior year, I chose to do an internship in Nashville. Harpeth Hall was primarily in charge of setting up the internship for me. Being placed at Nashville PBS was an incredible experience.

My host, Samantha Andrews, Director of Education & Engagement at Nashville PBS, found numerous tasks around the office that she knew I would be interested in, including editing scripts, running a camera during a live show, and shadowing during filming. Nashville PBS was a fantastic experience for me, and it fully solidified my decision to continue in a career in the film industry.”



# CHEEKWOOD IN BLOOM



## RED, WHITE *and* BLOOMS

**March 7 - April 12**

250,000 blooming red and white tulips, purple-blue violas, and hyacinths in honor of America 250. Music and food trucks available on the weekends and American art on display in the Mansion.

Tickets at [cheekwood.org](http://cheekwood.org).





- Audit & Advisory
- Tax Strategy & Compliance
- Outsourced Accounting & Analytics
- Forecasting & Budgeting Services
- Outsourced Human Resources
- Forensic Accounting & Litigation Support
- Managed IT & Cybersecurity
- Business Valuation

- Regional accounting, consulting, & information technology firm
- Providing business solutions for nearly 40 years
- Strong in integrity & customer service

Everything we do can be summarized in Crosslin's tagline "Do More. Be More.®" It highlights the commitment that the Crosslin team will do more, so our clients can in turn be more.

615.320.5500

[www.crosslinpc.com](http://www.crosslinpc.com)



*Bedspread, by Margaret Wood Dodge and John Wood Dodge, 1860, 2019.58.1*



# TENNESSEE VOICES, AMERICAN STORIES

*Exhibition in 2026*



**OPEN TO THE PUBLIC**  
1000 Rosa L. Parks Blvd.  
Nashville, Tennessee

615.741.2692 • [TNMuseum.org](http://TNMuseum.org)



# DOWNLOAD THESE



## HERE'S WHY...

Nashville PBS now offers two powerful ways to stream your favorite content, giving you flexibility in how you watch.

### THE PBS APP

The PBS App features thousands of full-length videos and the ability to watch live TV from Nashville PBS. You can stream award-winning films and iconic series from PBS and Nashville PBS ANYTIME and ANYWHERE.

Activating the PBS App allows you to watch content on demand. Easily connect with programs from Nashville PBS, access your Watchlist, and sync all of your favorite local and national shows across your devices.

### NASHVILLE PBS+ (New!)

Nashville PBS+ is a modern, all-in-one streaming experience created for our members. You'll find Nashville PBS+ re-imagined to be faster, smarter, and more personal than previous viewing options.

- Smarter navigation that finds your next favorite show fast!
- Curated collections featuring PBS classics with Nashville PBS Originals.
- Personalized recommendations that learn what you love.
- High-definition streaming on every device.

You can download the FREE PBS APP and Nashville PBS+ to your tablet, TV, smartphone, or any of your viewing devices.

Nashville  PBS



# TWO GREAT APPS

## PBS PASSPORT

With a Nashville PBS Annual \$60 Membership (only \$5/month), PBS Passport gives you extended access to a digital on-demand library of more than 1,500 episodes of PBS fan favorites. Plus new programs are being added regularly.

For example, you will have extended access to past fan favorites like GREAT PERFORMANCES, FINDING YOUR ROOTS and NOVA and AMERICAN MASTERS. You can also stream early releases of new series and binge-watch PBS favorites like MISS SCARLET, ALL CREATURES GREAT & SMALL, and BOOKISH. There's plenty of local stories too, like COUNTRY MUSIC: A NASHVILLE STORY, MUSIC ROW... and the list goes on and on.

## AVAILABLE ON BOTH APPS

PBS Passport works seamlessly on both the PBS App and Nashville PBS+, giving you the flexibility to choose your preferred viewing experience.

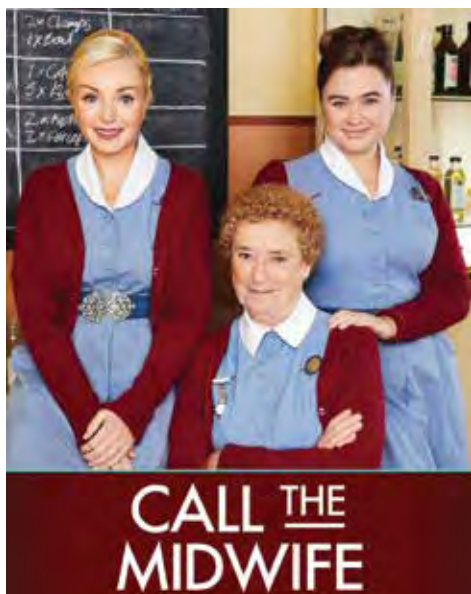
## PLATFORMS

Both apps are currently available to download on the following platforms: Android, iOS, Roku, Samsung Smart TV (Tizen), Apple TV, Android TV, Amazon Fire TV, Amazon Firestick, and Chromecast. Nashville PBS+ is also available on LG TVs.



# PBS HIGHLIGHTS

Antenna Ch. 8.1; Charter Ch. 8; Comcast-Xfinity Ch. 8, 1008



## Call The Midwife

### New Season 15

Starting Sun, March 22 at 7pm

The new season kicks off in 1971 as several of the ladies embrace Women's Lib and burn their bras outside Nonnatus House. Over the year, the team handles challenging cases including premature birth, placenta previa, kidney cancer, tuberculosis, and slavery.

**March 22** – The Nonnatus team grow increasingly concerned for the welfare of four young children. Sister Catherine faces her first solo delivery, and the midwives attend a women's lib meeting.

**March 29** – A new medical technique threatens to change the face of obstetrics forever, whilst a potential rabies outbreak has Poplar in a state of fear. Cyril meets Rosalind's parents.

**April 5** – Rosalind's skills are tested when she is drawn into an unusual domestic case. Joyce is seconded to the hospital and befriends a single mother with a rare blood group.

**April 12** – Sister Catherine is distraught when a newborn baby is snatched from the maternity home.

**April 19** – Tragedy strikes a local family, and Dr Turner's actions come under scrutiny. Sister Julianne must make a decision.

**April 26** – The Nonnatus team help a young father come to terms with a life-threatening diagnosis.



## The Forsytes

### New Masterpiece Series

Starting Sun, March 22 at 8pm

Money and society dictate the rules in rapidly-changing Victorian London, where four generations of the wealthy Forsyte family of stockbrokers navigate high-risk investments and the even higher expectations of making the right marital match. Desire, ambition, and betrayal all boil down to the eternal dilemma: should one be ruled by the head or the heart?

**March 22** – Chance encounters for cousins Jo and Soames Forsyte, rival heirs to the family firm, throw their previously steady lives into disarray.

**March 29** – After a family night at the opera, Jo makes a life-changing discovery, while Soames, smitten with Irene, makes a hasty decision.

**April 5** – Jo hopes to fulfill newfound obligations while James's attempts to sabotage him intensify. June seeks solace with Philip. Soames promises Irene a move to Paris.

**April 12** – Jo recommits to his family, James is furious with Soames and Irene and Soames' Parisian adventure ends early.

**April 19** – Disaster strikes at Forsyte & Co. as Soames puts an end to Irene's Parisian dreams. Louisa faces a shock eviction.

**April 26** – Soames commissions a country house as Jo decides his future. Meanwhile, Ann reveals a dark secret.



## The Count of Monte Cristo

### New Masterpiece Series

Starting Sun, March 22 at 9pm

Edmond Dantes, is falsely accused of treason, and imprisoned without trial in a grim island fortress. After many years of captivity, Dantes finally escapes and discovers treasure. Under the identity of the Count of Monte Cristo, he plans to take revenge on those who wrongly accused him.

**March 22** – **The Letter:** Amid disaster at sea, first mate Edmond Dantès takes command of his late captain's ship. Enemies send him to prison on a false charge.

**March 29** – **The Castle:** Edmond meets Abbé Faria, a priest who has long attempted to escape, who reveals the location of a treasure.

**April 5** – **The Treasure:** Edmond escapes, finds the treasure, and transforms himself into the Count, as he plots his revenge.

**April 12** – **The Red Room:** Edmond tracks down the men who betrayed him. His beloved Mercedes, now married to Fernand, feels uneasy in Edmond's presence.

**April 19** – **The Ball:** Edmond infiltrates the lives of his betrayers, discovering more dark secret. Mercedes suspects his true identity.

**April 26** – **Providence:** Edmond meddles in the lives of those he wishes to destroy and tries to conceal his identity from Mercedes.

**May 3** – **The Duel:** As Edmond's revenge unfolds, Albert challenges him to a duel amid high stakes.

**May 10** – **The Last Two:** Edmond targets his final enemies, but after years of deceit, is love still possible for him?

# PBS HIGHLIGHTS

Antenna Ch. 8.1; Charter Ch. 8; Comcast-Xfinity Ch. 8, 1008



## Henry David Thoreau

### Three Part Series

Mon, March 30 & Tues, March 31

Executive Producers Ken Burns & David Henley

HENRY DAVID THOREAU examines the life and work of the 19th-century writer in the context of antebellum New England and the larger United States, as well as through the universal themes he focused on in his writings: an individual's relationship to the state, how to live an authentic life, our connection to nature, and the impact of race on American life. Set against the political and social tensions of the mid-19th century, the film traces Thoreau's journey from his early days in Concord, Massachusetts to his deep engagement with the moral crises of his time, including industrialization, slavery, war, and environmental degradation. Through his essays, journals, and landmark works such as *Walden* and *Civil Disobedience*, he became an inspiration for generations of writers, thinkers, and activists.

#### March 30 at 8pm – Who Are We?

Henry David Thoreau's early life unfolds as a changing nation struggles to live up to its ideals, while industry threatens the landscape.

#### March 30 at 9pm – Being Alive

Living at his cabin at Walden Pond, Thoreau finds solace in "wild" nature and pours himself into his journal, laying the groundwork for one of two books he writes there.

#### March 31 at 8pm – Several More Days to Live

Thoreau undertakes new "experiments" as a surveyor, scientist, and abolitionist. He writes with a new urgency as a lifelong illness begins to catch up with him.



## Friday Night Arts

### Great Performances at the Met: "La Bohème"

Fri, March 20 at 8:30pm

Franco Zeffirelli's production brings 19th-century Paris to the Met Opera stage as young friends and lovers navigate the joy and struggle of bohemian life in Puccini's classic opera. Soprano Juliana Grigoryan stars the seamstress Mimì.

### Martha Graham Dance Company

Fri, March 27 & Fri, April 3 at 8:30pm

This two-part documentary tells the story of Martha Graham, the fiercely lived foundational artist, beset by conflict, competition and inspiration, and how she forged the path for the future of modern dance. The series captures how the fire, drive and passion of this towering figure continues to inspire dancers, artists and culture the world over. The Martha Graham Company, America's oldest and the longest running dance company, will celebrate its centennial anniversary in 2026.

### Great Performances "Now Hear This" Season 7

Fridays at 8:30pm starting April 10

This series takes viewers on a voyage of musical discovery for aficionados and neophytes alike. Presented by virtuoso violinist Scott Yoo, Chief Conductor and Artistic Director of the Mexico City Philharmonic, each episode reveals how some of the greatest classical music ever written came to be. NOW HEAR THIS, Season 7 features the music of Iceland, Scott Joplin, Kyung-Wha Chung, and Johannes Brahms.



## NOVA:

### Athens: Birth of Democracy

Wed, April 15 at 8pm

The United States has experimented with democracy for 250 years, but our system of government was once a radical idea, born in ancient Greece. Ravaged by civil war and tyranny 2,500 years ago, the city of Athens forged a revolutionary new system where power truly belonged to citizens.

Historian Bettany Hughes explores how ancient Athens evolved from an authoritarian city-state into the first major experiment in democracy. The film traces Athens' political, social, and cultural transformation during its Golden Age, examining how democratic ideals such as citizen participation, liberty, and free speech developed and how they were embodied in Athenian institutions.

Athens' struggle with aristocratic rule, military victories (like at Salamis), and economic resources allowed democracy to take root and flourish. In doing so, the program also looks at Athenian society's contradictions — including slavery, gender restrictions, and imperial ambitions — alongside its achievements in philosophy, arts, and governance.

Archaeological quests uncover everything from fragments of ancient voting machines to mass graves. Discover the dark secrets and innovative solutions that defined the world's first direct democracy. What enduring lessons can this surprising historical journey offer us today?

# MEMBERSHIP SPECIAL HIGHLIGHTS

NASHVILLE PBS is grateful for your support! Your sustaining donations are vital in helping us continue to serve Nashville and Middle Tennessee!

Antenna Ch. 8.1; Charter Ch. 8; Comcast-Xfinity Ch. 8, 1008



## Barry Manilow | Live by Request

**March 1 at 6:30pm; March 2 at 3pm;  
March 10 at 4:30pm; March 20 at 4:30pm.**

Originally broadcast live throughout the U.S. in December 1996, the show features the beloved singer/songwriter in top form as some of his most ardent fans call in to request their favorite songs and chat with the star in real time. Among the Manilow classics performed are *Somewhere In the Night*, *Mandy*, *Copacabana*, *Daybreak*, and *I Write the Songs*.

## America Made with Love | Part 2

**March 3 at 4:30pm & 10:30pm; March 11 at 4:30pm,  
March 19 at 4:30pm**

This newest episode of the Emmy Award-winning *Made with Love* series journeys from coast to coast, spotlighting the ingenuity, vision, and unparalleled talent of some of the nation's most extraordinary artisans. From a masterful guitar maker to a basket weaver passing on a craft rooted in history, these stories celebrate creativity rich in tradition and passion.



## Chicago & Friends | Live at 55

**March 5 at 9pm; March 9 at 6:30pm; March 10 at 7pm;  
March 13 at 3pm; March 18 at 8:30pm; March 21 at 7pm**

To celebrate the 55th anniversary of their groundbreaking double-Platinum debut album, *Chicago Transit Authority*, the band plays songs from the album, including some never-before-performed songs. In addition to their biggest hits, the set also includes "unplugged" versions of some of Chicago's classic tunes.

\* featuring Concert Tickets As a Thank You Gift.

## Celtic Woman | 20th Anniversary

**March 1 at 9pm; March 7 at 4pm;**

Celtic Woman is comprised of four young Irish women whose performing skills bring centuries of musical and cultural tradition to life. Their angelic voices and instrumental virtuosity are accompanied by a robust ensemble that includes Irish dancers, bagpipers and a full band playing an array of traditional Celtic instruments, including bodhrán, tin whistle, bouzouki and Uilleann pipes. \* featuring Concert Tickets As a Thank You Gift.



## Riverdance | 25th Anniversary

**March 2 at 7pm; March 7 at 6:30pm;  
March 9 at 7pm & 11:30pm; March 12 at 7:30pm**

A powerful and stirring reinvention of the show, celebrated the world over for its Grammy Award-winning music and the thrilling energy and passion of its Irish and international dance. \* featuring Concert Tickets As a Thank You Gift.

## Downton Abbey Marathons | Season 1

**March 15 from 12pm to 8pm; March 16 at 3pm**

The Crawleys are back! Full of passion, intrigue, sorrow and joy, *DOWNTON ABBEY* was a runaway hit when it debuted on PBS in 2011 and it is widely credited with reigniting America's love for British drama. Join us on March 15 for a first season marathon, and tune into Nashville Passport this spring where all seasons will be available to stream!





# CREATE SHOW MARATHONS



Antenna Ch. 8.4; Charter Ch. 190, 192, 193; Comcast-Xfinity Ch. 256, 1161

The Create Marathons run Friday 8 – 1pm, Saturday 7am – 12pm, Sunday 11am – 4pm, and weeknights 8 – 9pm & 1am – 2am



**TABLE for ALL**  
WITH  
**BUKIE ELEGBEDE**  
Starts Fri, Feb 27

Come along with Bukie Elegbede as he meets fascinating people and learns the stories and traditions behind the dishes that bring us together around the table.



**YOUR BEST FIT**  
Starts Fri, March 6

Get creative with your wardrobe! Whether you're looking to design your own garments, restyle some old favorites, or just looking for inspiration, FIT 2 STITCH has all the tips you need to find your best fit.



**EXPLORING IRELAND WITH MICHAEL**  
Starts Fri, March 13

You're invited on an Irish adventure with Michael Londra. Get swept away by the striking landscapes, experience the magic of the history and traditions, and prepare to be dazzled by talented performers from all corners of the Emerald Isle.



**NATIONAL FLOWER DAY**  
Starts Fri, March 20

What would spring be without flowers? Celebrate the start of spring and National Flower Day with ten back-to-back episodes of J. SCHWANKE'S LIFE IN BLOOM and welcome the beauty of flowers into your home.



**Sara's Weeknight Meals**  
**WEEKNIGHT WINS**  
Starts Fri, March 27

Join Sara Moulton as she shows you easy ways to score some weeknight wins in the kitchen. From simple dishes that pack big flavors to meals that can be repurposed into something completely new with a few easy tweaks, you'll be ready to tackle your menu with ease.



Antenna Ch. 8.2; Charter Ch. 176; Comcast-Xfinity Ch. 241



## CROSSINGS

Thurs, March 12 at 3pm & 7pm; Fri, March 13 at 3am & 10am; Sat, March 14 at 9pm & 11pm; Sat, March 15 at 4am & 12pm

Follow a diverse group of international women peacemakers as they embark on a bold and symbolic journey across the Demilitarized Zone (DMZ) between North and South Korea — the most fortified border in the world. Their aim is to call for an official end to the 70-year conflict that has divided the Korean peninsula since the Korean War.

The film focuses on the women's logistical, political, and emotional challenges during the trek, highlighting their connections with Korean women on both sides of the divide. It also explores the broader historical legacies of war, separation, and reconciliation. Among the group are Nobel Peace Laureates and prominent activists, including Gloria Steinem and Christine Ahn, who reflect on the impact of the conflict and the ongoing work for peace.



**FREE**  
Games App

New Games to Discover,  
Explore & Learn!  
**BONUS** parent features

## BETTER THAN EVER!

The PBS KIDS games have been redesigned to make it easier to navigate to your favorite show AND discover new content.

PLUS a new “Stream-First” approach lets you jump right into playing without having to download the game. That makes it not only faster to start playing – it also frees up storage space on your device!



Kids 2-8 learn science, math, creative thinking and more when they play games alongside their favorite PBS KIDS characters.



**PBS KIDS**

[PBS KIDS.org/apps/pbs-kids-games](https://www.pbs-kids.org/apps/pbs-kids-games)



**COUNT ON PBS KIDS!**  
Watch Now

## PBS KIDS CHANNEL

Over the Air - 8.3; Comcast - 242;  
Charter - 189 or 192; Google Fiber - 87

**Download the PBS KIDS app!**

6:00am	Pinkalicious & Peterrific
6:30am	Curious George
7:00am	Sesame Street
7:30am	Phoebe & Jay
8:00am	Work It Out Wombats!
8:30am	Work it Out Wombats!
9:00am	Daniel Tiger's Neighborhood
9:30am	Daniel Tiger's Neighborhood
10:00am	Carl the Collector
10:30am	Carl the Collector
11:00am	Donkey Hodie
11:30am	Donkey Hodie
12:00pm	Elinor Wonders Why
12:30pm	Rosie's Rules
1:00pm	Phoebe & Jay
1:30pm	Xavier Riddle and the Secret Museum
2:00pm	Molly of Denali
2:30pm	Alma's Way
3:00pm	Lyla in the Loop
3:30pm	Weather Hunters
4:00pm	Odd Squad
4:30pm	Wild Kratts
5:00pm	Wild Kratts
5:30pm	Weather Hunters
6:00pm	Lyla in the Loop
6:30pm	Arthur
7:00pm	Nature Cat
7:30pm	Hero Elementary
8:00pm	Cyberchase
8:30pm	Let's Go Luna!
9:00pm	Phoebe & Jay
9:30pm	Xavier Riddle and the Secret Museum
10:00pm	Molly of Denali

# DAYTIME SCHEDULE



**Airing Fri, March 20 at 8pm**

Barry "Butch" Wilmore is a NASA astronaut, retired U.S. Navy captain and proud Tennessean whose career has taken him from the skies over combat zones to the edge of space. A veteran of multiple spaceflights, Wilmore has served as a space shuttle pilot and as commander of the International Space Station, logging hundreds of days in orbit. Most recently, he helped lead the first crewed flight test of Boeing's Starliner spacecraft, playing a key role in the next chapter of American human spaceflight. From Mount Juliet to outer space, Wilmore's journey reflects discipline, courage and a lifelong commitment to exploration.

## Weekday Schedule

- |                                  |                           |
|----------------------------------|---------------------------|
| 5:00 Classical Stretch           | 12:00 Donkey Hodie        |
| 5:30 Yoga in Practice            | 12:30 Phoebe & Jay        |
| 6:00 Wild Kratts                 | 1:00 Elinor Wonders Why   |
| 6:30 Weather Hunters             | 1:30 Work It Out Wombats! |
| 7:00 Lyla in the Loop            | 2:00 Odd Squad            |
| 7:30 Carl The Collector          | 2:30 Arthur               |
| 8:00 Daniel Tiger's Neighborhood | 3:00 Cooking Shows        |
| 8:30 Molly of Denali             | 3:30 Travel Shows         |
| 9:00 At-Home Learning            | 4:00 NPT Favorites        |
| 11:00 Sesame Street              | 5:00 NPT Favorites        |
| 11:30 Rosie's Rules              | 6:00 PBS NewsHour         |

## Saturdays

- |  |                              |
|--|------------------------------|
| 5:00 Mr. Rogers' Neighborhood                      | 12:00 America's Test Kitchen |
| 5:30 Arthur  | 12:30 Cook's Country         |
| 6:00 Wild Kratts                                   | 1:00 Pati's Mexican Table    |
| 6:30 Weather Hunters                               | 1:30 Farmer and the Foodie   |
| 7:00 Lyla in the Loop                              | 2:00 Fork & Hammer           |
| 7:30 Carl The Collector                            | 2:30 Fit 2 Stitch            |
| 8:00 Daniel Tiger's Neighborhood                   | 3:00 Best of Joy of Painting |
| 8:30 Phoebe & Jay                                  | 3:30 Volunteer Woodworker    |
| 9:00 Best of Sewing with Nancy                     | 4:00 Woodsmith Shop          |
| 9:30 Quilting Arts                                 | 4:30 This Old House          |
| 10:00 Garden Smart                                 | 5:00 Ask This Old House      |
| 10:30 Tim Farmer's Country Kitchen                 | 5:30 Wild Side               |
| 11:00 Lidia's Kitchen                              | 6:00 Horizons from PBS News  |
| 11:30 Christopher Kimball's Milk Street Television | 6:30 Cavern Sessions         |

## Sundays

- |                                  |                                      |
|----------------------------------|--------------------------------------|
| 5:00 Mr. Rogers' Neighborhood    | 10:30 Nature                         |
| 5:30 Arthur                      | 11:30 Washington Week                |
| 6:00 Wild Kratts                 | 12:00 To the Contrary                |
| 6:30 Weather Hunters             | 12:30 Firing Line                    |
| 7:00 Skillville                  | 1:00 Masterpiece/NPT Favorites       |
| 7:30 Carl The Collector          | 3:00 Samantha Brown's Places to Love |
| 8:00 Daniel Tiger's Neighborhood | 3:30 Rick Steves' Europe             |
| 8:30 Phoebe & Jay                | 4:30 Travels with Darley             |
| 9:00 Wild Side                   | 5:00 Antiques Roadshow               |
| 9:30 Volunteer Gardener          | 6:00 Compass Points from PBS News    |
| 10:00 Tennessee Crossroads       | 6:30 NPT Originals                   |

Our weekend schedule may occasionally include special programs as part of our Membership Campaign; please check our online schedule at [wnpt.org/schedule](http://wnpt.org/schedule) for the latest information, or scan the barcode.



**Nashville, TN | Lipscomb University  
April 10-12, 2026**

**Animation Y'all! Expo**

**GET YOUR TICKETS TODAY**

# MARCH Primetime

\*subject to change

DATES	7:00pm	7:30pm	8:00pm	8:30pm	9:00pm
<b>1 SUN</b>	<i>*Barry Manilow: Live By Request* (cont.)</i>		<i>*All Creatures Great &amp; Small: Seasons of the Dales*</i>		
<b>2 MON</b>	<i>*Riverdance 25th Anniversary Show*</i>				<i>*The All New Rock, Pop and Doo Wop*</i>
<b>3 TUE</b>	<i>*The Making of the American Revolution*</i>				<i>*Rick Steves' Fascism in Europe*</i>
<b>4 WED</b>	<i>*Nature   Parenthood: The Greatest Adventure*</i>			<i>*NOVA   The Planets: Mars*</i>	
<b>5 THU</b>	Tennessee Crossroads	<i>*Brit Floyd: The Moon, The Wall and Beyond*</i>			<i>*Chicago &amp; Friends: Live at 55*</i>
<b>6 FRI</b>	<i>*Washington Week with the Atlantic*</i>	Firing Line with Margaret Hoover	<i>*Pavarotti 90: The Man Who Moved the World*</i>		
<b>7 SAT</b>	<i>*Riverdance 25th Anniversary Show* (cont.)</i>			<i>*Magic Moments: The Best of 50s Pop*</i>	
<b>8 SUN</b>	<i>*More Deconstructing The Beatles* (cont.)</i>		<i>*The Manners of Downton Abbey: A Masterpiece Special*</i>		
<b>9 MON</b>	<i>*Celtic Woman 20th Anniversary Concert*</i>				<i>*Moments to Remember*</i>
<b>10 TUE</b>	<i>*Chicago &amp; Friends: Live at 55*</i>			<i>*Brit Floyd: The Moon, The Wall and Beyond*</i>	
<b>11 WED</b>	<i>*Country Classics*</i>			<i>*Willie Nelson's 90th Birthday Celebration*</i>	
<b>12 THU</b>	Tennessee Crossroads	<i>*Riverdance 25th Anniversary Show*</i>			
<b>13 FRI</b>	<i>*Washington Week with the Atlantic*</i>	Firing Line with Margaret Hoover	<i>*Barbra Streisand: Timeless - Live in Concert*</i>		
<b>14 SAT</b>	<i>*60s and 70s Soul Celebration*</i>				
<b>15 SUN</b>	<i>*Downton Abbey Season 1 - Finale* (cont.)</i>		<i>*The Forsytes: An Inside Look*</i>		<i>*60s and 70s Soul Celebration*</i>
<b>16 MON</b>	<i>*Willie Nelson's 90th Birthday Celebration*</i>				<i>*Country Classics*</i>
<b>17 TUE</b>	<i>*Rick Steves' Heart of Italy*</i>		American Masters: Bella! This Woman's Place is in the House		
<b>18 WED</b>	<i>*Brit Floyd: The Moon, The Wall and Beyond*</i>			<i>*Chicago &amp; Friends: Live at 55*</i>	
<b>19 THU</b>	Tennessee Crossroads	<i>*Opryland: A Promise Broken*</i>			<i>*Nashville PBS Favorites*</i>
<b>20 FRI</b>	Washington Week with the Atlantic	Firing Line with Margaret Hoover	Clean Slate with Becky Magura	Great Performances at the Met: La Boheme	
<b>21 SAT</b>	<i>*Chicago &amp; Friends: Live at 55*</i>			<i>*Brit Floyd: The Moon, The Wall and Beyond*</i>	
<b>22 SUN</b>	Call the Midwife Season 15 - Premiere		The Forsytes on Masterpiece - Premiere		The Count of Monte Cristo on Masterpiece - Premiere
<b>23 MON</b>	Antiques Roadshow: Coastal Maine Botanical Gardens, Hour 3		Made in the West - Premiere		Antiques Roadshow: Stan Hywet Hall & Gardens
<b>24 TUE</b>	Finding Your Roots Season 11: Larger Than Life		Breaking the Deadlock: Gambling with Your Life		White with Fear
<b>25 WED</b>	Nature   Raptors: A Fistful of Daggers: Meet the Raptors		NOVA: Baltimore Bridge Collapse		Secrets of the Dead: King Arthur's Lost Kingdom
<b>26 THU</b>	Tennessee Crossroads	Volunteer Gardener	A Slice of the Community: Hawks Talk Podcast	Made in the West	
<b>27 FRI</b>	Washington Week with the Atlantic	Firing Line with Margaret Hoover	Retro Tennessee Crossroads	Martha Graham Dance Company: We Are Our Time - American Spirit	
<b>28 SAT</b>	Lawrence Welk Show: The Irish Show		Keeping Up Appearances: Onslow's Birthday	As Time Goes By: An Old Flame	As Time Goes By: The New Neighbours
<b>29 SUN</b>	Call the Midwife Season 15 - Part II		The Forsytes on Masterpiece - Part II		The Count of Monte Cristo on Masterpiece - Part II
<b>30 MON</b>	Antiques Roadshow: Castle Farms, Hour 1		Henry David Thoreau: Who Are We? - Premiere		Henry David Thoreau: Being Alive
<b>31 TUE</b>	Finding Your Roots Season 11: The Butterfly Effect		Henry David Thoreau: Several More Lives to Live - Conclusion		FRONTLINE: The Deal



\*subject to change

DATES	9:30pm	10:00pm	10:30pm	11:00pm	11:30pm
1 SUN	<i>*Celtic Woman 20th Anniversary Concert*</i>				<i>*Change Your Brain, Change Your Pain*</i>
2 MON	<i>*The All New Rock, Pop and Doo Wop* (cont.)</i>			<i>*Barbra Streisand: Timeless - Live in Concert*</i>	
3 TUE	<i>*Rick Steves' Fascism in Europe* (cont.)</i>		<i>*America Made with Love: Part 2*</i>		
4 WED	<i>*NOVA   The Planets (cont.)</i>	<i>*Change Your Brain, Change Your Pain with Daniel Amen, MD*</i>			
5 THU	<i>*Chicago &amp; Friends: Live at 55* (cont.)</i>		<i>*More Deconstructing The Beatles*</i>		
6 FRI	<i>*Pavarotti 90* (cont.)</i>	<i>*Celtic Woman 20th Anniversary Concert*</i>			
7 SAT	<i>*Magic Moments: The Best of 50s Pop* (cont.)</i>			<i>*The Highwaymen Live at Nassau Coliseum*</i>	
8 SUN	<i>*More Manners of Downton Abbey: A Masterpiece Special*</i>			<i>*The Making of the American Revolution*</i>	
9 MON	<i>*Moments to Remember* (cont.)</i>				<i>*Celtic Woman 20th Anniversary*</i>
10 TUE	<i>*Brit Floyd* (cont.)</i>	<i>*60s and 70s Soul Celebration*</i>			
11 WED	<i>*Willie Nelson's 90th Birthday Celebration* (cont.)</i>		<i>*The Making of the American Revolution*</i>		
12 THU	<i>*The Great Irish Songbook*</i>			<i>*Pavarotti 90: The Man Who Moved the World*</i>	
13 FRI	<i>*Barbra Streisand: Timeless* (cont.)</i>	<i>*The All New Rock, Pop and Doo Wop*</i>			
14 SAT	<i>*60s and 70s Soul Celebration* (cont.)</i>	<i>*Willie Nelson's 90th Birthday Celebration*</i>			
15 SUN	<i>*60s and 70s Soul Celebration* (cont.)</i>				
16 MON	<i>*Country Classics* (cont.)</i>		<i>*Kris Kristofferson: Life &amp; Songs*</i>		
17 TUE	American Masters: Bella! (cont.)	<i>*Barbra Streisand: Timeless - Live in Concert*</i>			
18 WED	<i>*Chicago &amp; Friends: Live at 55* (cont.)</i>	<i>*Change Your Brain, Change Your Pain with Daniel Amen, MD*</i>			
19 THU	<i>*Nashville PBS Favorites* (cont.)</i>				
20 FRI	Great Performances at the Met: La Boheme (cont.)			<i>*60s and 70s Soul Celebration*</i>	
21 SAT	<i>*Brit Floyd* (cont.)</i>	<i>*60s and 70s Soul Celebration*</i>			
22 SUN	The Count of Monte Cristo (cont.)	The Puzzle Lady - Premiere		Murder in the Mountains - Premiere	
23 MON	Antiques Roadshow (cont.)	Independent Lens: Keep Quiet and Forgive			BBC News
24 TUE	White with Fear (cont.)		Aging Matters: Women Unseen	BBC News	Tennessee Crossroads
25 WED	Secrets of the Dead (cont.)	Pompeii: The New Dig - The Bodies		BBC News	Volunteer Gardener
26 THU	Facing the Laughter: Minnie Pearl			BBC News	A Slice of the Community: Confronting Anti-Blackness
27 FRI	Martha Graham Dance Company (cont.)	Great Performances   Tiler Peck: Suspending Time		BBC News	Tennessee Wild Side
28 SAT	Stage Season 4: The Suburbs with Matt Wilson		Live from the Artists Den: Reprise - Ben Harper		Austin City Limits: Robert Gasper/Domi and JD Beck
29 SUN	The Count of Monte Cristo (cont.)	The Puzzle Lady - Part II		Murder in the Mountains: Vintage Love	
30 MON	Henry David Thoreau (cont.)	Voyage of Adventure: Retracing Donelson's Journey		BBC News	Retro Tennessee Crossroads
31 TUE	FRONTLINE: The Deal (cont.)	FRONTLINE   Status: Venezuelan		BBC News	Tennessee Crossroads
	9:30pm	10:00pm	10:30pm	11:00pm	11:30pm

# APRIL Primetime

\*subject to change

DATES	7:00pm	7:30pm	8:00pm	8:30pm	9:00pm
<b>1 WED</b>	Nature   Raptors: A Fistful of Daggers: Extreme Lives		NOVA   Your Brain: Perception Deception		Our New World: The Pulse of Change
<b>2 THU</b>	Tennessee Crossroads	Volunteer Gardener	Benjamin Franklin: Join Or Die (1706-1774)		
<b>3 FRI</b>	Washington Week with the Atlantic	Firing Line with Margaret Hoover	To Be Announced	Martha Graham Dance Company: We Are Our Time - Athletes of God	
<b>4 SAT</b>	Lawrence Welk Show: Easter		Keeping Up Appearances: Singing for Emmet	As Time Goes By: The Bypass	As Time Goes By: Too Old..... Or Too Nosy?
<b>5 SUN</b>	Call the Midwife Season 15 - Part III		The Forsytes on Masterpiece - Part III		The Count of Monte Cristo on Masterpiece - Part III
<b>6 MON</b>	Antiques Roadshow: Castle Farms, Hour 2		Down the Duck with John Guide		Antiques Roadshow: Stan Hywet Hall & Gardens
<b>7 TUE</b>	Finding Your Roots Season 12: Song of the South		Lucy Worsley Investigates: The American Revolution - Premiere		FRONTLINE
<b>8 WED</b>	Nature   Becoming Elephant: The Orphans of Reteti, Part 1		NOVA   Your Brain: Who's in Control?		Our New World: A Wild Renaissance - Conclusion
<b>9 THU</b>	Tennessee Crossroads	Volunteer Gardener	To Be Announced	Secrets of the Royal Palaces: Love and Marriage - Premiere	
<b>10 FRI</b>	Washington Week with the Atlantic	Firing Line with Margaret Hoover	To Be Announced	Great Performances Now Hear This Season 7 Brahms: Free but Alone - Premiere	
<b>11 SAT</b>	Lawrence Welk Show: Fashions and Hits Through the Years		Keeping Up Appearances: The Toy Store	As Time Goes By: The Old Folk's Party	As Time Goes By: The Proposal
<b>12 SUN</b>	Call the Midwife Season 15 - Part IV		The Forsytes on Masterpiece - Part IV		The Count of Monte Cristo on Masterpiece - Part IV
<b>13 MON</b>	Antiques Roadshow: Castle Farms, Hour 3		Antiques Roadshow: Santa Fe's Museum Hill, Hour 1		To Be Announced
<b>14 TUE</b>	Finding Your Roots Season 12: Rags to Riches		Lucy Worsley Investigates: The American Revolution - Conclusion		FRONTLINE
<b>15 WED</b>	Nature   Becoming Elephant: The Orphans of Reteti, Part 2		NOVA   Athens: Birth of Democracy		Secrets of the Dead: The Civil War's Lost Massacre
<b>16 THU</b>	Tennessee Crossroads	Volunteer Gardener	To Be Announced	Secrets of the Royal Palaces: Private Life	
<b>17 FRI</b>	Washington Week with the Atlantic	Firing Line with Margaret Hoover	To Be Announced	Great Performances Now Hear This Season 7: Everyone Loves Joplin	
<b>18 SAT</b>	Lawrence Welk Show: Tribute to the Sweet & Swing Bands		Keeping Up Appearances: The Three Piece Suite	As Time Goes By: A Deeply Personal Problem	As Time Goes By: Animal Magnetism
<b>19 SUN</b>	Call the Midwife Season 15 - Part V		The Forsytes on Masterpiece - Part V		The Count of Monte Cristo on Masterpiece - Part V
<b>20 MON</b>	Antiques Roadshow: 250 Years of Americana		The American Revolution: In Order to be Free		
<b>21 TUE</b>	Finding Your Roots Season 4: Puritans and Pioneers		The American Revolution: An Asylum for Mankind		
<b>22 WED</b>	Nature: Legendary Tigers of India		NOVA: Rain Bombs		Wilding
<b>23 THU</b>	Tennessee Crossroads	Volunteer Gardener	To Be Announced	Secrets of the Royal Palaces: Royal Scandals	
<b>24 FRI</b>	Washington Week with the Atlantic	Firing Line with Margaret Hoover	To Be Announced	Great Performances Now Hear This Season 7: The Call of Istanbul	
<b>25 SAT</b>	Lawrence Welk Show: Top Songs from Broadway Musicals		Keeping Up Appearances: A Picnic for Daddy	As Time Goes By: The Bathroom	As Time Goes By: Surprising News
<b>26 SUN</b>	Call the Midwife Season 15 - Part VI		The Forsytes on Masterpiece - Finale		The Count of Monte Cristo on Masterpiece - Part VI
<b>27 MON</b>	Antiques Roadshow: Grants Farm, Hour 1		The American Revolution: The Times That Try Men's Souls		
<b>28 TUE</b>	Finding Your Roots Season 8: Hidden in the Genes		The American Revolution: Conquer by a Drawn Game		
<b>29 WED</b>	Nature   Woodpeckers: The Hole Story		NOVA: Return to the Moon		Shared Planet: Cities - Premiere
<b>30 THU</b>	Tennessee Crossroads	Volunteer Gardener	To Be Announced	Secrets of the Royal Palaces: Royal Duty - Conclusion	
	<b>7:00pm</b>	<b>7:30pm</b>	<b>8:00pm</b>	<b>8:30pm</b>	<b>9:00pm</b>

\*subject to change

SCAN TO SEE  
 THE TWO-WEEK TV SCHEDULE  
 WITH CREATE & WORLD CHANNELS



DATES	9:30pm	10:00pm	10:30pm	11:00pm	11:30pm
<b>1 WED</b>	Our New World (cont.)	Pompeii: The New Dig - Escape		BBC News	Volunteer Gardener
<b>2 THU</b>	Benjamin Franklin (cont.)	Benjamin Franklin: An American (1775-1790)			
<b>3 FRI</b>	Martha Graham Dance Company (cont.)	Great Performances: The Magic of Nureyev		BBC News	Tennessee Wild Side
<b>4 SAT</b>	The Pointer Sisters: So Excited!		Live from the Artists Den: Reprise - The Swell Season		Austin City Limits: Noah Kahan/Flor de Toloache
<b>5 SUN</b>	The Count of Monte Cristo (cont.)	The Puzzle Lady - Part III		Murder in the Mountains: Under Surveillance	
<b>6 MON</b>	Antiques Roadshow (cont.)	Independent Lens: The Tallest Dwarf			BBC News
<b>7 TUE</b>	FRONTLINE (cont.)	To Be Announced		BBC News	Tennessee Crossroads
<b>8 WED</b>	Our New World (cont.)	Pompeii: The New Dig - The Final Hours		BBC News	Volunteer Gardener
<b>9 THU</b>	Lucy Worsley's Royal Palace Secrets		Finding Your Roots Season 12: Song of the South		BBC News
<b>10 FRI</b>	Lafayette: The Lost Hero		History with David Rubenstein	BBC News	Tennessee Wild Side
<b>11 SAT</b>	Luther Vandross: Live at Wemble		Live from the Artists Den: Reprise - Raphael Saadiq		Austin City Limits: Lil Yachty/Sudan Archives
<b>12 SUN</b>	The Count of Monte Cristo (cont.)	The Puzzle Lady - Part IV		Murder in the Mountains: Marburg Fever	
<b>13 MON</b>	To Be Announced (cont.)	Independent Lens   Backside: The Unseen Hands of Horse Racing		BBC News	Roadtrip Nation: The Inside Scholar
<b>14 TUE</b>	FRONTLINE (cont.)	To Be Announced		BBC News	Tennessee Crossroads
<b>15 WED</b>	Secrets of the Dead (cont.)	Pompeii: The New Dig - House of Treasures		BBC News	Volunteer Gardener
<b>16 THU</b>	Lucy Worsley's Holmes vs. Doyle: Doctor and Detective		Finding Your Roots Season 12: Rags to Riches		BBC News
<b>17 FRI</b>	A More Perfect Union: Inspiring Civic & Civil Conversations Across America		History with David Rubenstein	BBC News	Tennessee Wild Side
<b>18 SAT</b>	Air Supply: 50th Anniversary Concert		Live from the Artists Den: Reprise - Aimee Mann		Austin City Limits: Tanya Tucker/Brittney Spencer
<b>19 SUN</b>	The Count of Monte Cristo (cont.)	The Puzzle Lady - Part V		Murder in the Mountains: Dangerous Game	
<b>20 MON</b>	The American Revolution (cont.)	Creation Rose		BBC News	Roadtrip Nation: The Inside Scholars
<b>21 TUE</b>	The American Revolution (cont.)	Crossroads of a Nation: Missouri's Rhythm, Roads & Roots		BBC News	Tennessee Crossroads
<b>22 WED</b>	Wilding (cont.)		Down the Duck with John Guider		BBC News
<b>23 THU</b>	Lucy Worsley's Holmes vs. Doyle: Fact and Fiction		Finding Your Roots Season 4: Puritans and Pioneers		BBC News
<b>24 FRI</b>	International Jazz Day from Abu Dhabi		History with David Rubenstein	BBC News	Tennessee Wild Side
<b>25 SAT</b>	I Want My '80s Tour Live		Live from the Artists Den: Reprise - KT Tunstall		Austin City Limits: Jason Isbell and the 400 Unit
<b>26 SUN</b>	The Count of Monte Cristo (cont.)	The Puzzle Lady - Finale		Murder in the Mountains: Blood Ties	
<b>27 MON</b>	The American Revolution (cont.)	Our Vanishing Americana: Florida		BBC News	To Be Announced
<b>28 TUE</b>	The American Revolution (cont.)	Down the Duck with John Guider		BBC News	Tennessee Crossroads
<b>29 WED</b>	Shared Planet (cont.)	Human Footprint: Strangers in Paradise		BBC News	Volunteer Gardener
<b>30 THU</b>	Lucy Worsley's Holmes vs. Doyle: Shadows and Sleuths		Finding Your Roots Season 8: Hidden in the Genes		BBC News
	<b>9:30pm</b>	<b>10:00pm</b>	<b>10:30pm</b>	<b>11:00pm</b>	<b>11:30pm</b>

## VIEWERS LIKE ME SUPPORT

Nashville  PBS



Show your support at  
[wnpt.org/me](http://wnpt.org/me)

### Courtney Fullum

PBS played a significant role in the my childhood by providing educational and entertaining content, including cartoons and Shakespeare plays, which connected them to my community and beyond.

I'm grateful for PBS's ongoing efforts to empower and educate the community, and it's special impact on all of our lives.



# Landmark Roofing



615-573-2555



[landmarkroofingexperts.com](http://landmarkroofingexperts.com)

# TAX CHANGES & CHARITABLE DONATIONS

Tax season is officially upon us, as the IRS began accepting electronically filed tax returns on January 26. Changes have taken place in the federal tax code that may affect how you decide to look at your future charitable donations, as well as how you choose to file your return.

To slightly backtrack, the recently passed tax bill known as the "One Big Beautiful Bill" was signed into law on July 4, 2025, and included several important changes related to charitable giving.

Below are seven important elements of the new law, which took effect on Jan 1, 2026.

## WHAT'S STAYING THE SAME

**Tax brackets:** The new law permanently extends the 10%, 12%, 22%, 24%, 35% and 37% income tax rates.

**Standard deduction:** The standard deduction will remain \$15,750 for individuals and \$31,500 for married couples in 2025. It will be indexed for inflation thereafter.

**Deduction limits for cash gifts:** The act permanently extends the 60%-of-AGI (adjusted gross income) limitation for cash gifts to public charities and keeps in place the deduction limits for gifts of long-term capital gain property.

**Estate tax exemption:** The federal estate and gift tax exemption will increase to \$15 million per individual (adjusted annually for inflation). This provision is now permanent.

## WHAT'S NEW IN 2026

**New tax deduction for non-itemizers:** You can deduct up to \$1,000 (individuals) or \$2,000 (married couples) for charitable gifts, even if you don't itemize. However, *gifts to donor advised funds are excluded from this new tax break.*

**A new floor on charitable deductions for itemizers:** The new law requires taxpayers to give at least 0.5% of their AGI to receive a tax benefit for their charitable giving. This means someone making \$200,000 annually would have a \$1,000 floor, meaning a \$900 donation would result in no deduction but a \$1,500 donation would result in a \$500 deduction.

**New cap on deductions:** The new law creates a cap on the value of charitable deductions that will hit taxpayers in the highest bracket. Under current law, top earners get a 37-cent tax benefit for every \$1 deducted. Starting in 2026, that benefit will be capped at 35 cents per dollar, meaning a \$10,000 charitable contribution would yield \$3,500 in federal income tax savings instead of \$3,700. For those in the top tax bracket, these changes are likely to reduce the tax value of charitable giving starting in 2026. Donors who can take advantage of the current law should consider increasing their giving in 2025. For example, donors may wish to front-load several years of giving into a new or existing donor advised fund (DAF).

We encourage you to consult with your tax advisor to understand how these changes may affect your giving in 2026 and beyond.

---

As a courtesy, Nashville PBS mailed out 2025 tax receipts to all donors in January. If you did not receive your 2025 tax receipt from us or need another copy, please contact us at [members@wnpt.org](mailto:members@wnpt.org) and we'll be happy to assist you.

We are so grateful for your dedication to our mission and your continued investment in keeping public television strong and vibrant for years to come. Your generosity has fueled Nashville PBS with renewed hope and energy as we step into the new year. Together, we're stronger than ever.

Thank you!



Marianne Monoc  
Nashville PBS Chief Development Officer



## Nashville PBS PET CLUB

You hear it at the end of every program: "Made possible by viewers like you." But what about your pets? Don't they deserve some recognition, too? Chances are good they're sitting right there next to you on the couch, eager to flaunt their local, Nashville PBS pride!

Well, now they can by joining our brand-new Pet Club! For a sustaining membership of \$15 a month, up to three of your furry or scaly or gilled or hooved friends can become official members of the station! All pets are happily accepted and included!

The best part is that we'll be broadcasting and sharing photos on our social media channels of your pets sporting nifty Nashville PBS regalia (a bandana). Plus, they'll be welcomed into the club with a personalized card and coupons for discounted treats and toys because they're all so very good.

## There's an easy way to get rid of your unwanted vehicle... Donate it.

Avoid the hassles of selling or repairing your vehicle. The pick-up is free, and your gift is tax-deductible.



Donate Your Used Car,  
Motorcycle or RV.



1-855-500-7433  
or  
[wnpt.org/car](http://wnpt.org/car)

Nashville  PBS

@ Nashville Public Television  
161 Rains Avenue  
Nashville, TN, 37203  
WNPT.org

PLEASE RECYCLE



NONPROFIT ORG  
U.S. POSTAGE PAID  
NASHVILLE PBS  
35203


**Festival Anual 22**  
**Southeast**  
**Busqueda de huevos y Festival**  
*en Antioch* Celebrando Alfabetismo y Los Artes



Sabado  
**28 de Marzo**  
10:00 AM  
- 2:00 PM


Centro Comunitario Southeast // 5260 Hickory Hollow Pkwy.  
[www.southeastegghuntevent.com](http://www.southeastegghuntevent.com)    

Arte de Conejito Creado por Estudiantes de Arte 2009 de Una Elementary



**SAVE THE DATE!**

**Sat., May 30, 2026**  
**11 A.M. – 3 P.M.**  
**At Nashville PBS**

Nashville  PBS